

## Product Specifications

<b>Average Recognition Time</b>	<b>0.5 sec</b>
<b>FAR</b>	<b>1/100000</b>
<b>Spatial Resolution</b>	<b>508 dpi</b>
<b>Battery Life</b>	<b>&gt;200 day</b>
<b>Locking Force</b>	<b>50-60KG (110-132lbs)</b>
<b>Size</b>	<b>88×55×25mm (3-1/2" × 2-3/16" × 1")</b>
<b>Capacity of Fingerprint</b>	<b>20</b>
<b>FRR</b>	<b>1.59%</b>
<b>Battery Capacity</b>	<b>400mAh</b>
<b>Charging Current</b>	<b>5VDC, 1A</b>
<b>N.W.</b>	<b>203g (7oz)</b>

## Battery Life

Stated battery life is based on optimal operational conditions. As with all lithium batteries, performance can be noticeably affected by cold temperatures. When using it outside, check the battery level regularly. If the LED turns purple during use, fully recharge the Padlock to avoid complete battery depletion.

**Note:** Operating temperatures below 0°C (32°F) may lead to a more dramatic reduction in battery performance. During periods of very cold weather, it is recommended to check more frequently.



Please scan above QR to get newest manuals on Blusafe Products



SCAN ME

Watch the set-up tutorial by scanning the QR code above with your camera or going to: <https://blusafesolutions.co.uk/how-to-videos/>

# Mirage Fingerprint Padlock

## Product Fitting Instructions

Please read carefully before installation

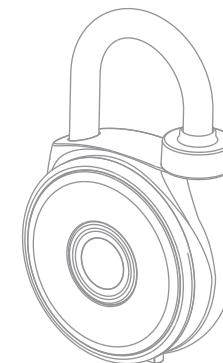
### Important !

After the initial use of the padlock and after a reset, the lock can be opened with each touch of the sensor.

The fingerprint sensor and finger that will touch the sensor should always be kept clean, dry and free of grease.

The fingerprints will remain stored when the battery runs out.

It is recommended to use this product in an environment where it will not be exposed to heavy rain or salt water, or direct sunshine, which could damage the internal electronics.



### Charge the battery

It is recommended to fully charge the padlock at room temperature before first use, this can take up to 5 hours. To maximize the performance of the padlock's lithium Add a comma we recommend fully recharge every 3 months.

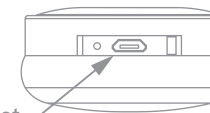
Insert the USB cable into the socket in the padlock and charge using a USB mains device or compatible mains wall plug.

The circular LED ring will illuminate red to indicate the padlock is charging. When the red LED turns off, charging is complete.

Close the rubber charging cover



Rubber cover



USB socket

### Fingerprint Registration

#### 1. At first use

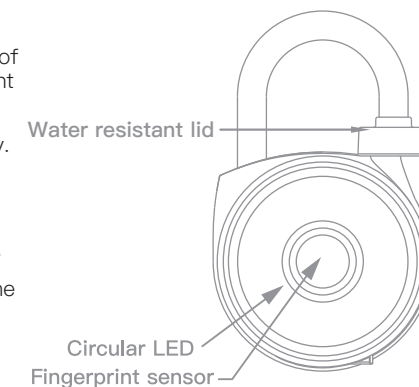
Press the fingerprint sensor to check that the battery has charged fully. The fingerprint sensor is located in the centre of the padlock. The circular LED ring around the sensor will light up.

If the BLUE LED lights up – Normal power. The lock is ready.

If the PURPLE LED lights up & a BEEP sounds– Low power. Lock can still operate. Fee required.

If the PURPLE LED lights up and stays on – Very low power.

Note that if the padlock does not operate normally at anytime please charge the battery.



## Fingerprint Registration

### 2. How to set up ADMIN Fingerprints

Note that the first 3 registered fingerprints are all ADMIN fingerprints. ADMIN fingerprints can be used to unlock the padlock and to authorise new user fingerprints.

- 2a Set up the first ADMIN fingerprint. Using the setting needle provided, gently press the setting microswitch (located under the rubber charging cover) for 3 seconds until 1 beep sounds and the BLUE LED lights up.

**WARNING :** Please do NOT push the needle too hard, as this can cause damage to the setting microswitch. A click should be felt when the needle makes contact with the microswitch, when operated correctly.

- 2b Press the fingerprint sensor. 1 triple beep will sound and the GREEN LED will flash. The BLUE LED lights up.

The fingerprint is authorised & the ADMIN registration is now ready.

**Note:** If the RED LED blinks without beeping, the sensor has not detected the fingerprint. Try again.

- 2c Press the fingerprint sensor 4 more times. 1 beep will sound and the GREEN LED flickers each time the sensor is pressed. On the final press, a triple beep sounds. ADMIN registration is complete.

**Note:** For the 2nd ADMIN fingerprint to be registered, step 2b must be done using the 1st ADMIN fingerprint. For the 3rd ADMIN fingerprint to be registered, step 2b can be done using either the 1st or 2nd ADMIN fingerprint. It is recommended to register ALL 3 ADMIN fingerprints on first use.

### 3. How to set up USER Fingerprints

Note that an ADMIN fingerprint will be required to authorize the register of new fingerprints on the padlock.

- 3a Using the setting needle provided, gently press the setting microswitch (located under the rubber charging cover) for 3 seconds until 1 beep sounds and the BLUE LED lights up.

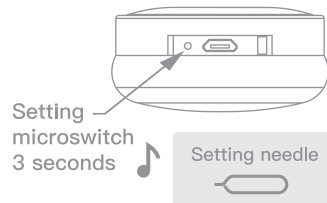
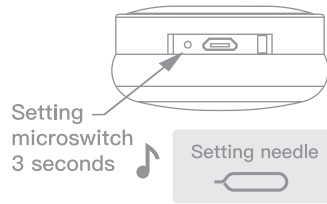
**WARNING:** Please do NOT push the needle too hard as this can cause damage to the setting microswitch. A click should be felt when the needle makes contact with the microswitch, when operated correctly.

- 3b Press the fingerprint sensor with a registered ADMIN fingerprint for authorisation. The BLUE LED flashes. Registration is now ready.

- 3c Press the sensor with a USER fingerprint. If the GREEN LED flashes and 1 beep sounds, the registration is valid.

Now press the sensor 4 more times with the same USER fingerprint. 1 beep will sound and the GREEN LED will flash each time the sensor is pressed. On the final press a triple beep sounds. USER registration is complete.

**Note:** If the RED LED flashes without beeping, the sensor has not detected the fingerprint. Try again.



## Unlocking the Padlock

Press the fingerprint sensor with a registered fingerprint.

If a triple beep sounds and the GREEN LED flashes, validation is ok and the padlock will open.

If a single beep sounds and the GREEN LED flashes, validation has failed. Press the fingerprint sensor again with a registered fingerprint.

### Deleting all fingerprints (reset)

- A Using the setting needle provided, gently press the setting microswitch (located under the rubber charging cover) for 5 seconds until 3 beeps sound and the RED LED lights 3 times.

**WARNING :** Please do NOT push the needle too hard as this can cause damage to the setting microswitch. A click should be felt when the needle makes contact with the microswitch, when operated correctly.

- B Press the fingerprint sensor with a registered ADMIN fingerprint. A triple beep sounds and the GREEN LED flashes. All fingerprint data has now been deleted and the padlock has been reset.

### Low battery indication

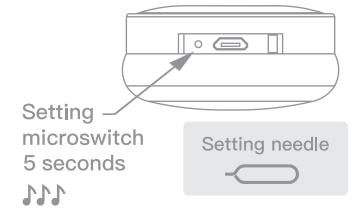
If the PURPLE LED flashes and 1 beep sounds, the padlock requires charging. Use the USB cable provided to do this.

### Notes

Recharge the padlock if it does not operate normally at any stage of operation. If the problem persists, reset the padlock.

When registering fingerprints, it is recommended that you press your finger on the sensor at different positions so that the fingerprint data is fully collected.

When the padlock has been reset there is no data saved, any fingerprint can be used to unlock.



SCAN ME

Watch the set-up tutorial by scanning the QR code above with your camera or going to: <https://blusafesolutions.co.uk/how-to-videos/>



Please scan above QR to get the newest manuals on Blusafe Products