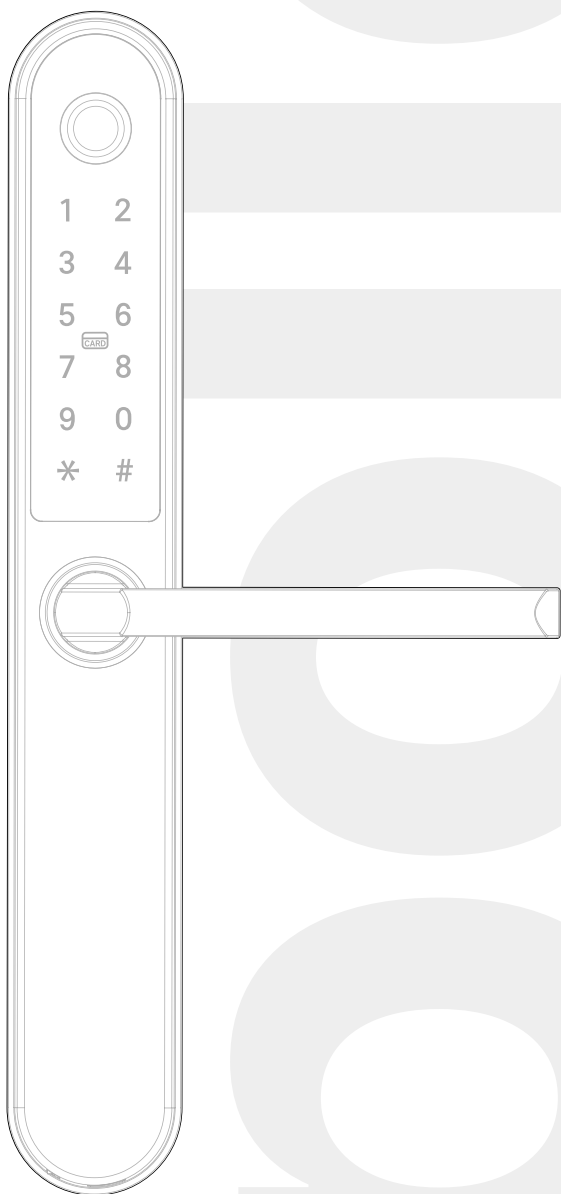


Apollo

Installation &
User Manual

V2024.2



Do you know we offer professional installation service?
Please scan the QR to find your local installer



Table of Contents

Install Apollo

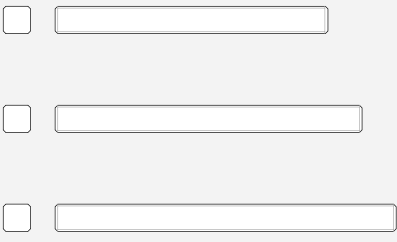
What's Included	1
Product Dimension	2.1
Factory Reset	2.2
Product Overview	2.3
Remove the Old Handle	2.4
Pre-assemble External Handle	2.5
Change Handle Direction	3
Install External Handle	4
Install Internal Handle	5

Use Apollo

Setup the App	6.1
Bluetooth Unlock	6.2
Add Fingerprints	7
Add Passcodes	8.1
Passcode Management	8.2
Create and Send e-Keys	9.1
e-Keys Management	9.2
Create Admin	9.3
Add Cards	10
Unlocking Records	11
Activate Passage Mode	12.1
Import Data From an Old Apollo Lock	12.2
Turn On/Off the Lock Sound	12.3
Transfer Lock to a New Owner	12.4
Pair Wi-Fi Bridge/Gateway	13

What's Included

1



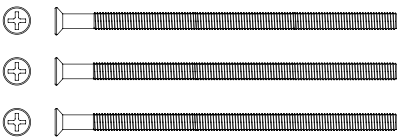
Spindle 80 mm×1
for 40-60mm door thickness
Spindle 100 mm×1
for 60-80mm door thickness
Spindle 110 mm×1
for 80-90mm door thickness



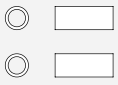
A1 M5X12mm Screw×2



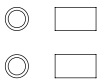
A2 M4X20mm Self-tapping
Screw×5
for Wooden Door



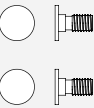
A3 M5X100mm Screw×3



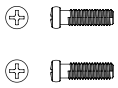
B1 M5X17mm Screw Stub×2



B2 M5X12mm Screw Stub×2
for 40mm door thickness



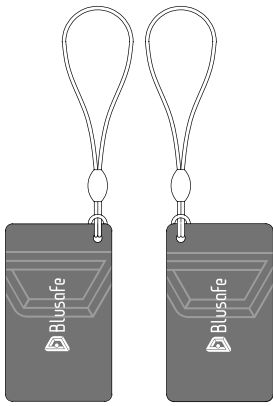
C M5X10mm Carriage Head
Screw×2



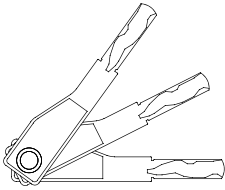
D M6X20mm Screw×2



E Spring Washer×2



Key Card×2



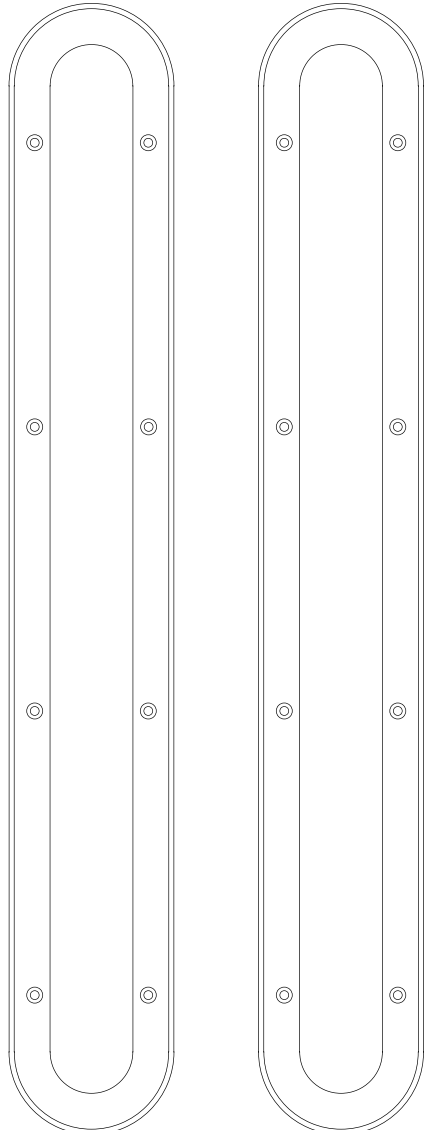
Key×3



Fitting Jlg×1



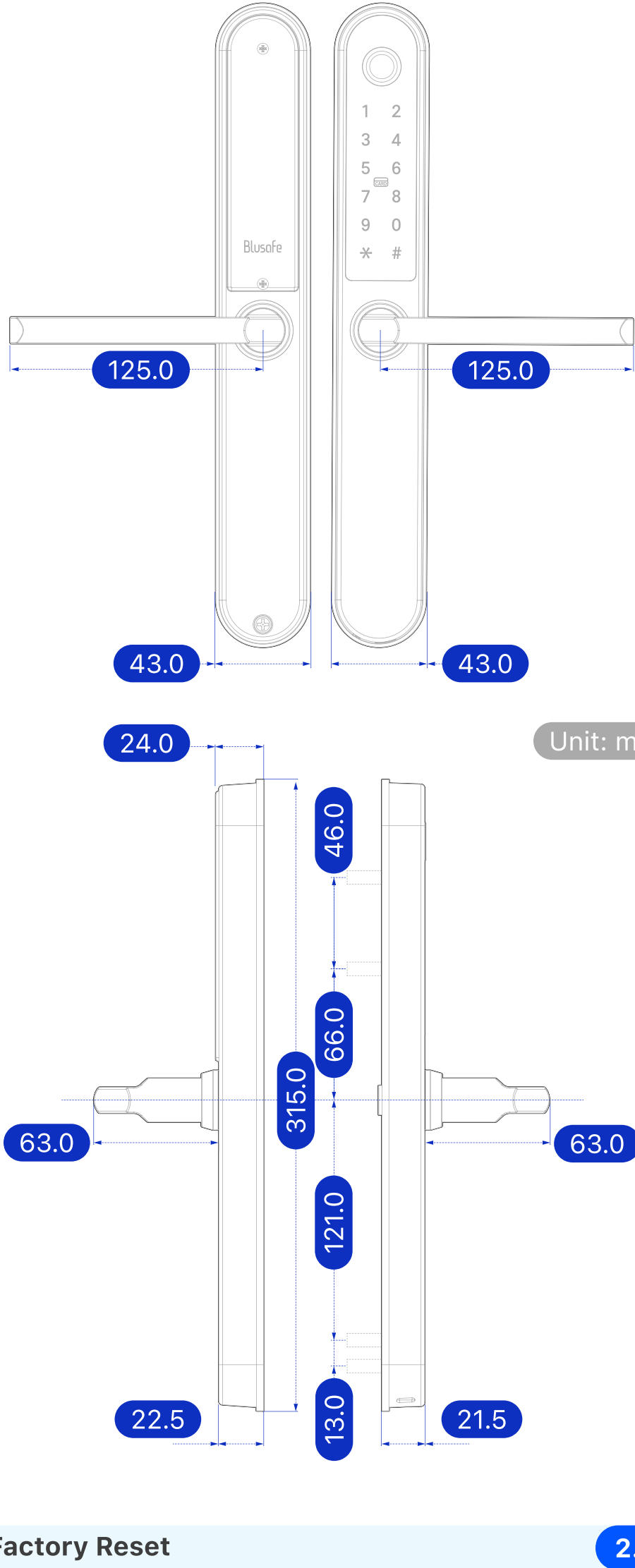
Decorative Plug×1



Gaskets×2

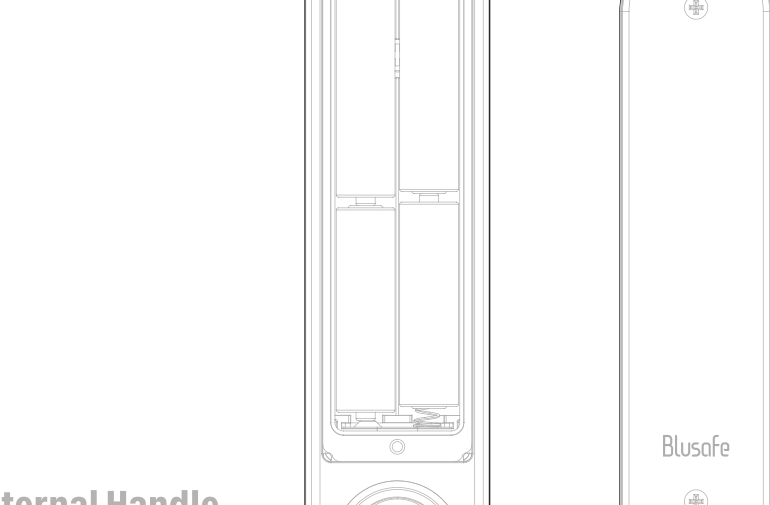
Product Dimension

2.1



Factory Reset

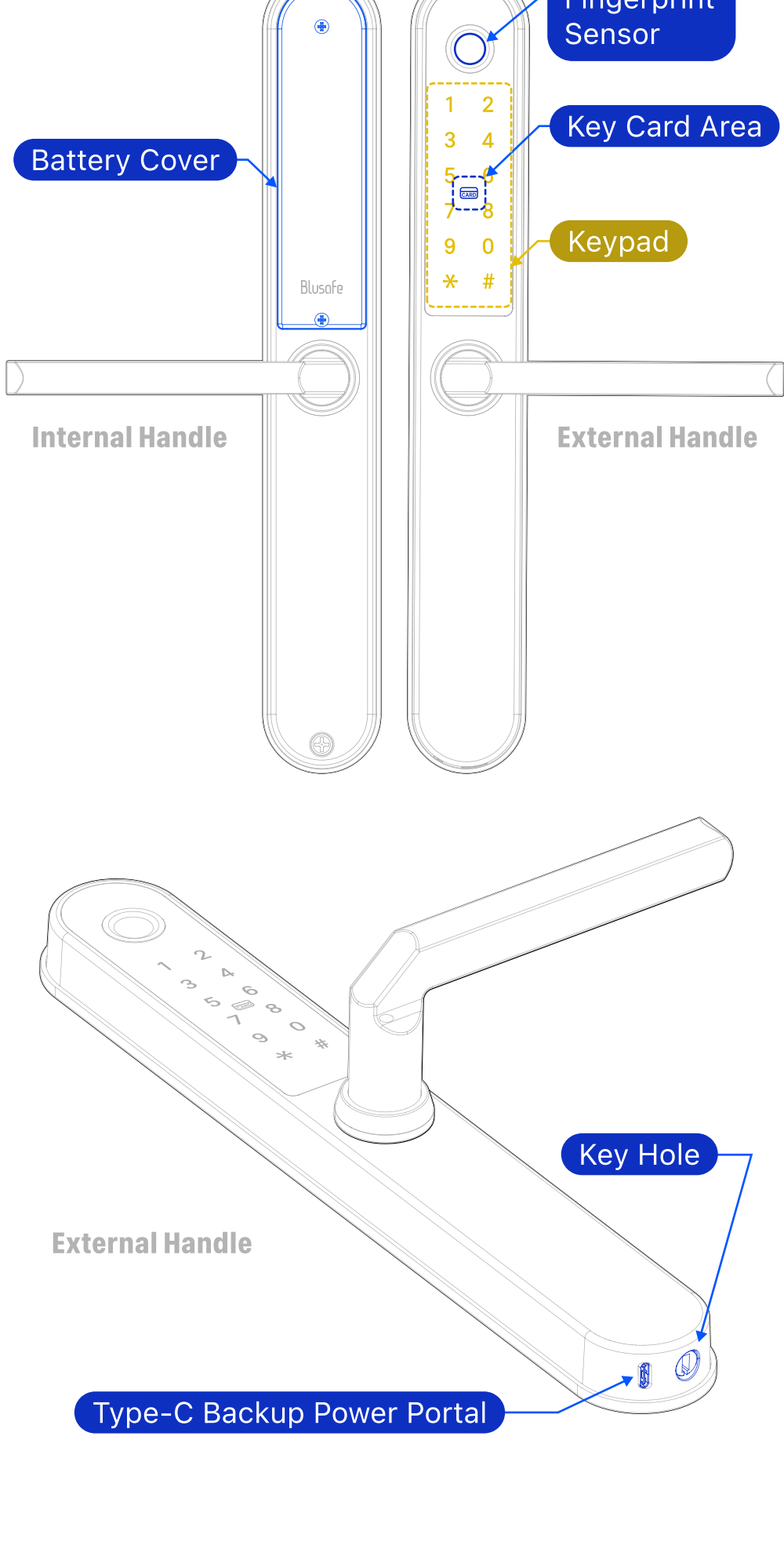
2.2



1. Open the battery cover.
2. Long-press the "Reset" button for 5 seconds.
3. Input "000#" on keypad after heard "Please input the initialization password".
4. Voice prompts "deleting administrator successfully" and then factory reset successfully.

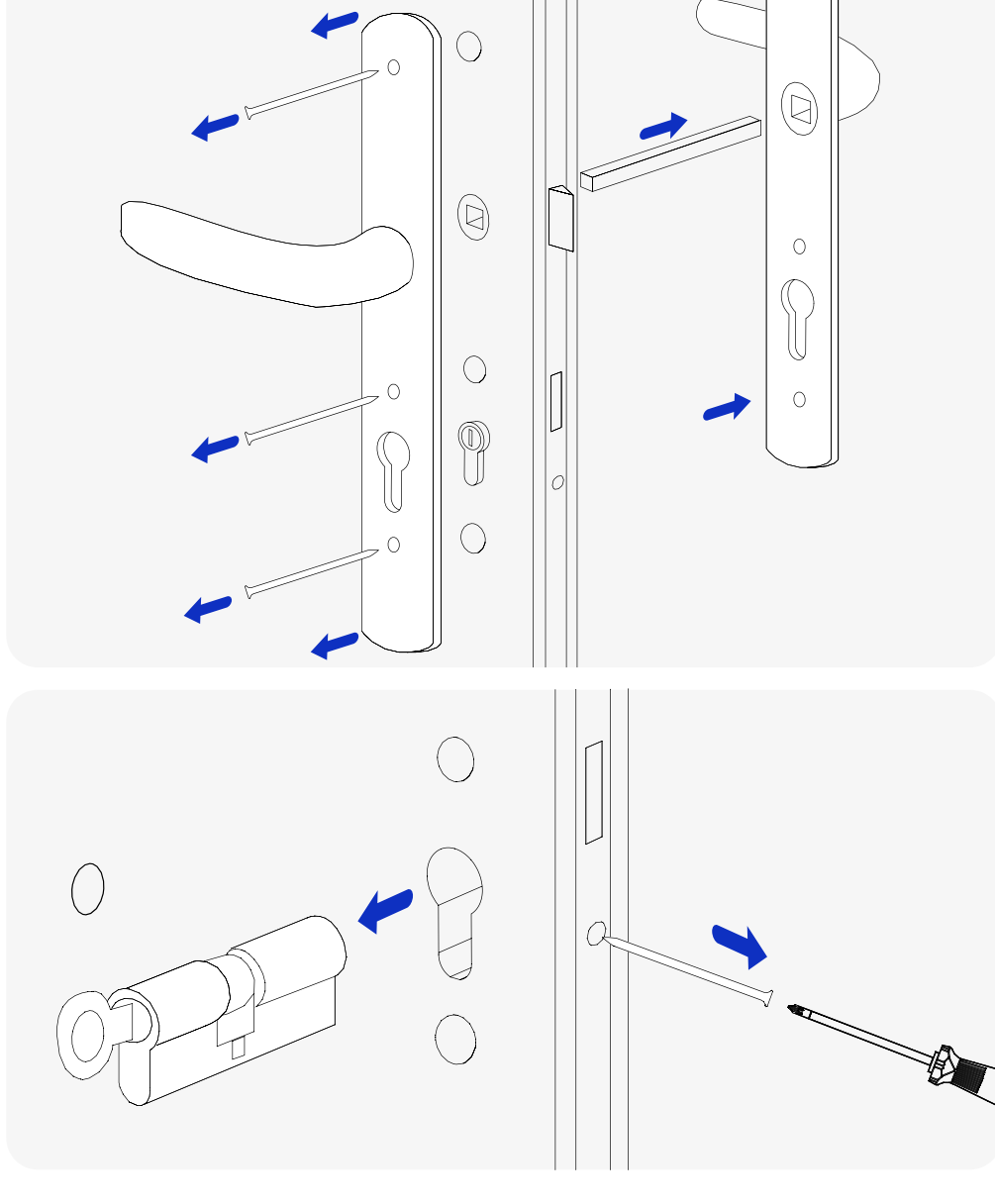
Product Overview

2.3



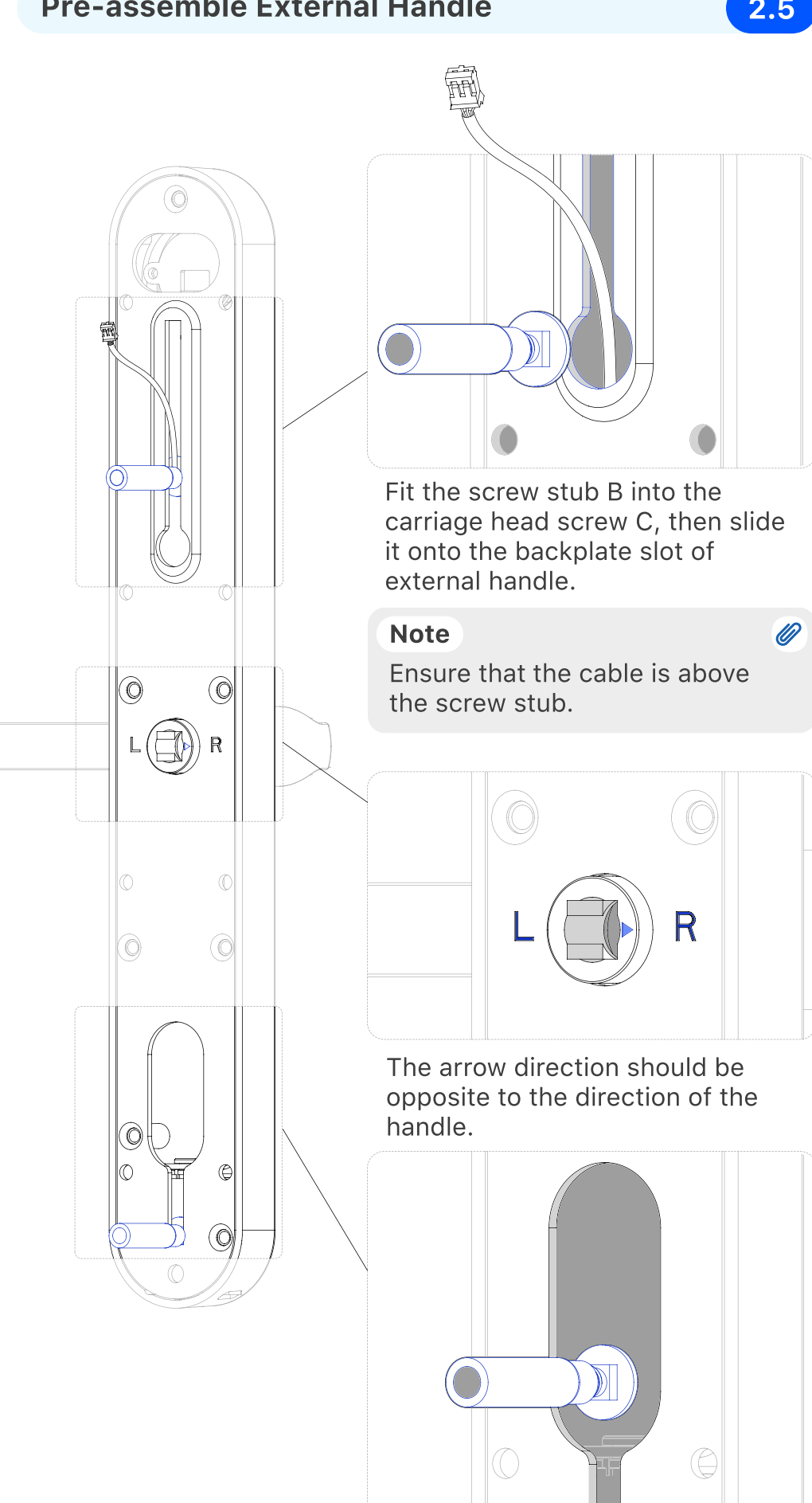
Remove the Old Handle

2.4



Pre-assemble External Handle

2.5



Door Thickness/mm

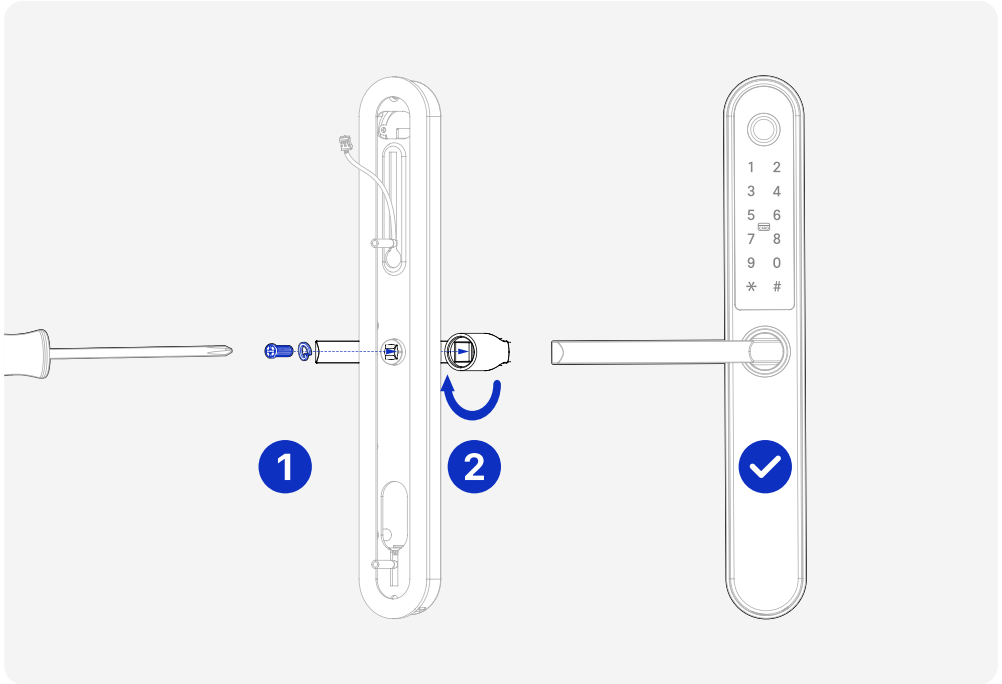
Screw Stub/mm

>40

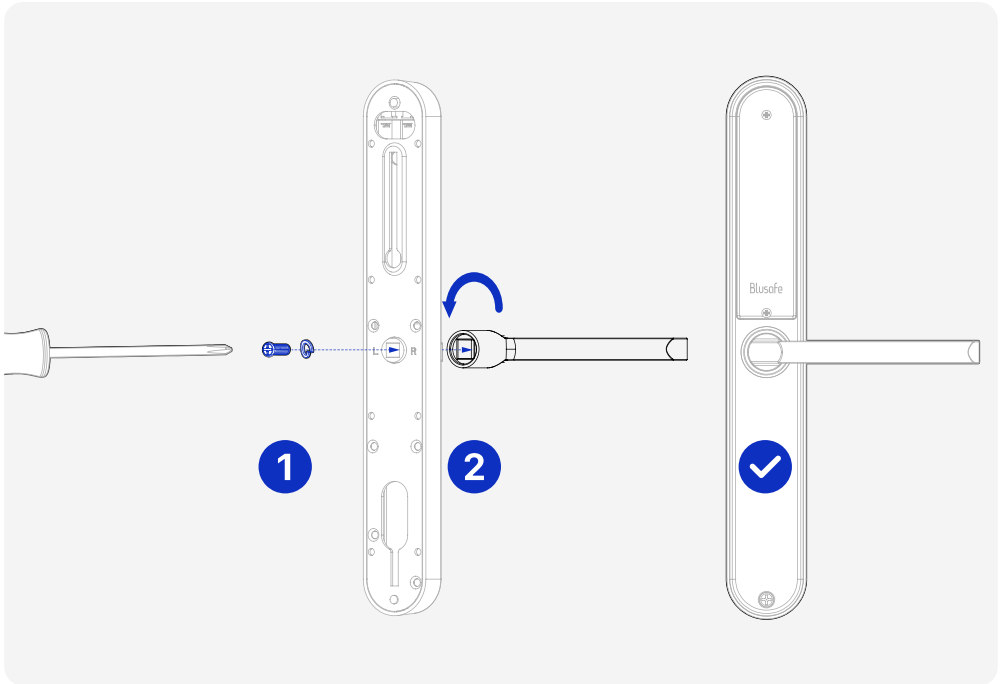
B1 M5X17

40

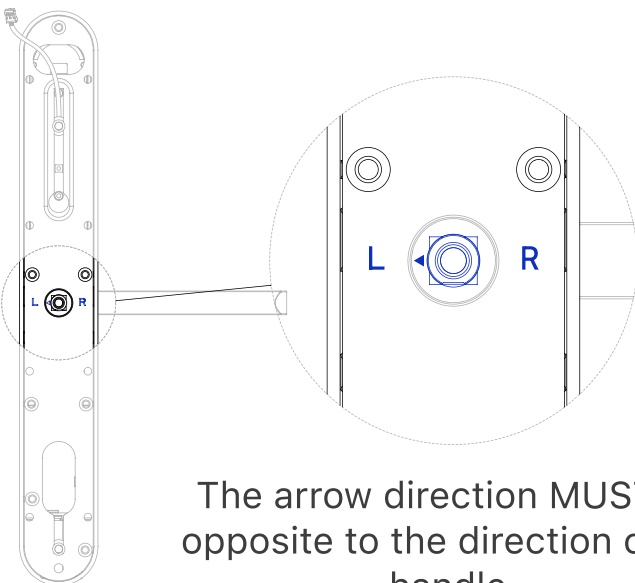
B2 M5X12



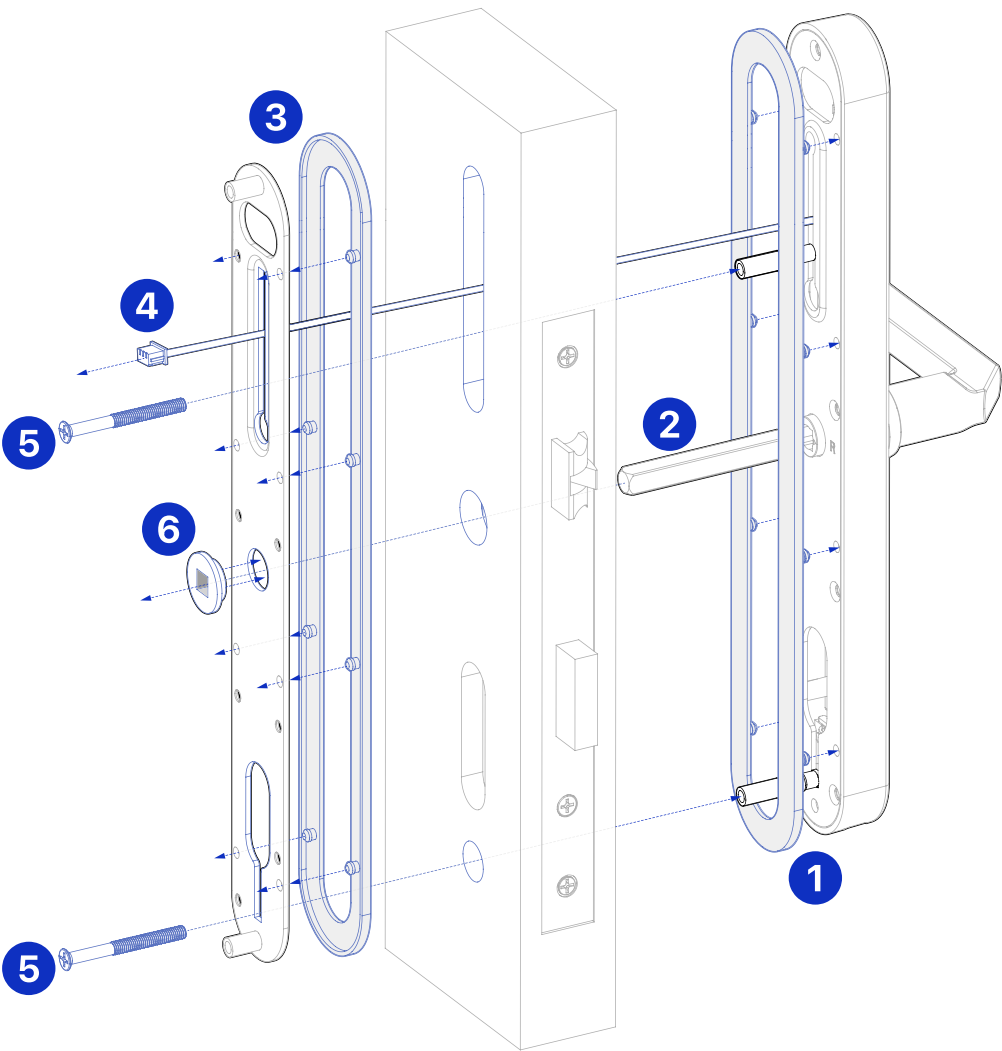
1. Unscrew the handle screw (Counterclockwise). Remove it and the spring washer and discard.
2. Remove the handle and rotate 180 degrees. Use the new handle screw D and spring washer E to fasten the handle.



Follow the same step 1&2 on external handle.



The arrow direction **MUST** be opposite to the direction of the handle.



1. Place the gasket onto the external handle.
2. According to the door thickness, select the corresponding spindle . Insert the spindle into the external handle.
3. Place the gasket onto the mounting plate, and push the fitting jig into the centre hole of the mounting plate.
4. Pass the cable through the lock body. Push the spindle on external handle though the lock body and secure it with the fixing jig.
5. Use a screwdriver to tighten the M5 screws A3 to the screw stub on the external handle.
6. Remove the fitting jig.

Tip

Please cut the screws A3 to appropriate length according to door thickness and screw stub selected.

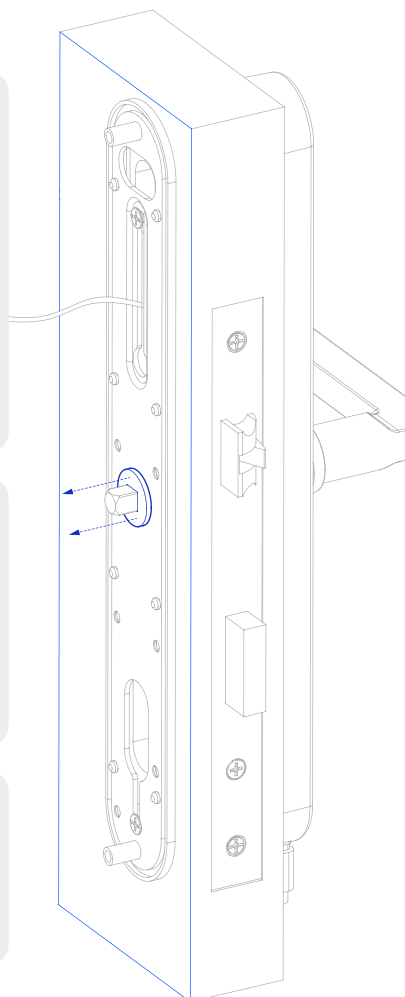
- If screw stub B1 is used, cut the screw length to 'door thickness + 10mm';
- If screw stub B2 is used, cut the screw length to 45mm.

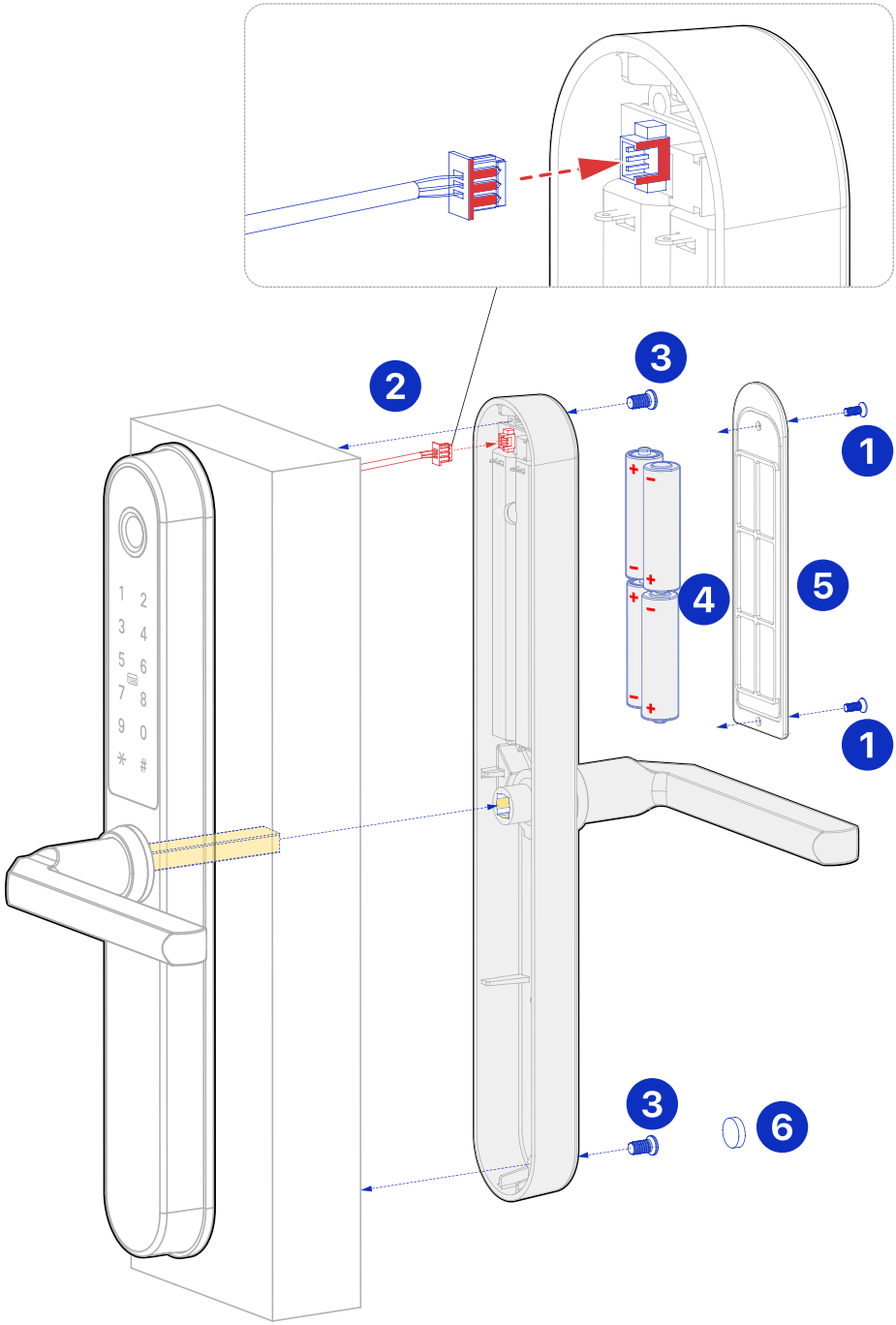
Note

The screw stubs are adjustable to fit existing holes on the door. If they cannot fit, utilise the provided template to drill additional holes onto the door.

Important !

The fitting jig **MUST** be used. Tighten screws A3 first then remove the jig.



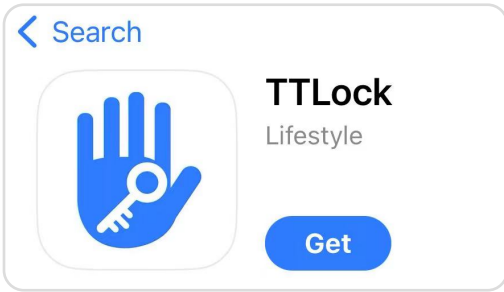


1. Remove screws from the battery cover.
2. Carefully connect connector to the port, ensuring the red side aligns with the red side as shown.
3. Conceal excess cable at the back of the battery compartment. Slowly push in internal handle while aligning it with the spindle. Ensure it sits properly on the mounting plate, then tighten the two fixing screws A1.
4. Insert four AA batteries (to be purchased separately).
5. Put on the battery cover and tighten the screws.
6. Fit the decorative plug.

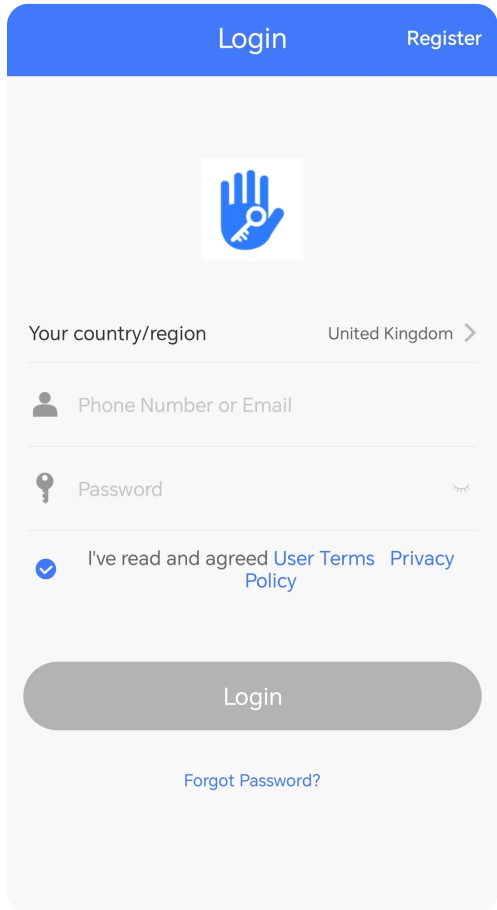
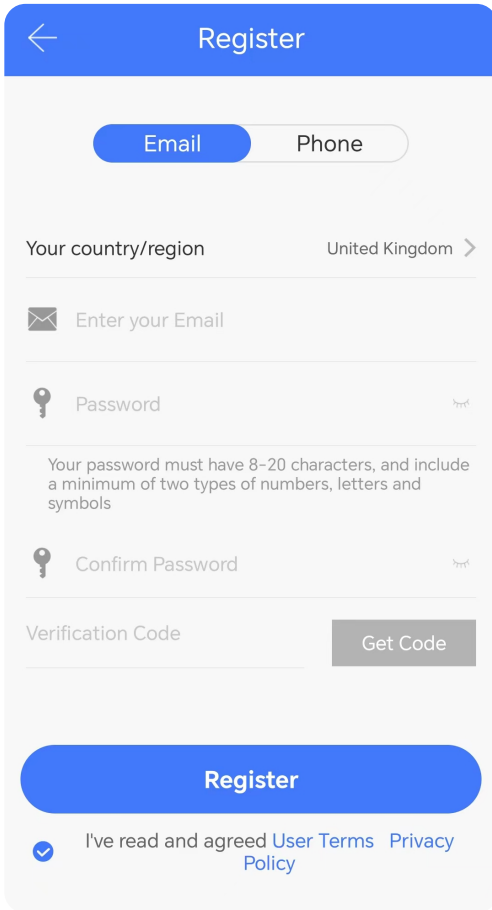
Setup the App

6.1

- 1 Download the "TTLock" App from the App Store or Google Play.



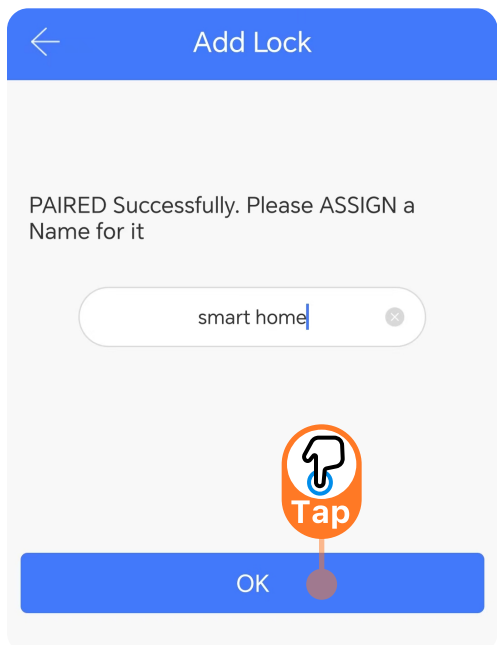
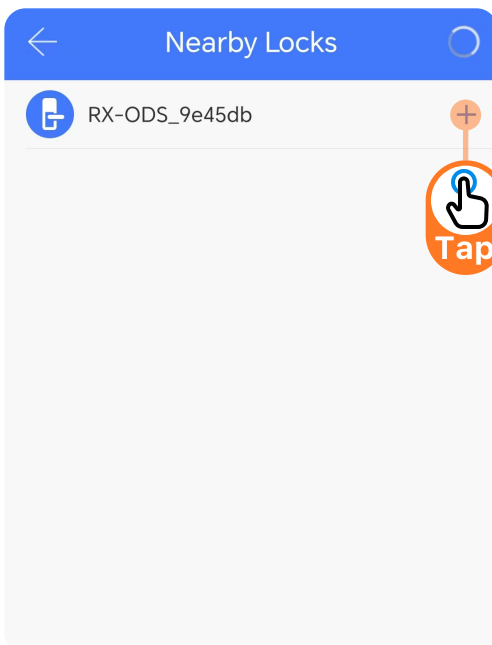
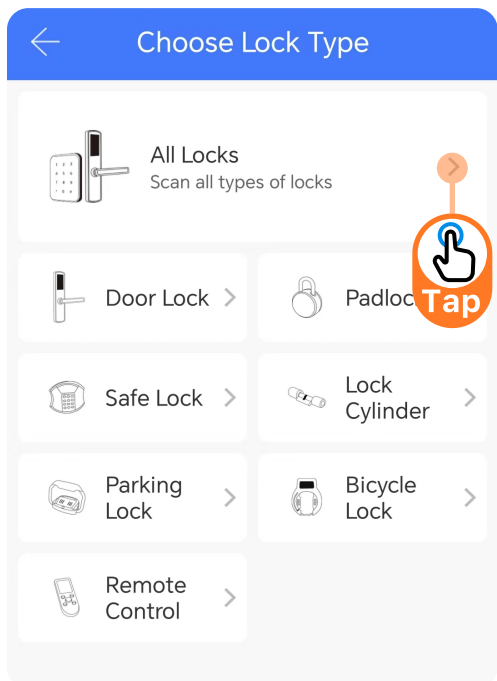
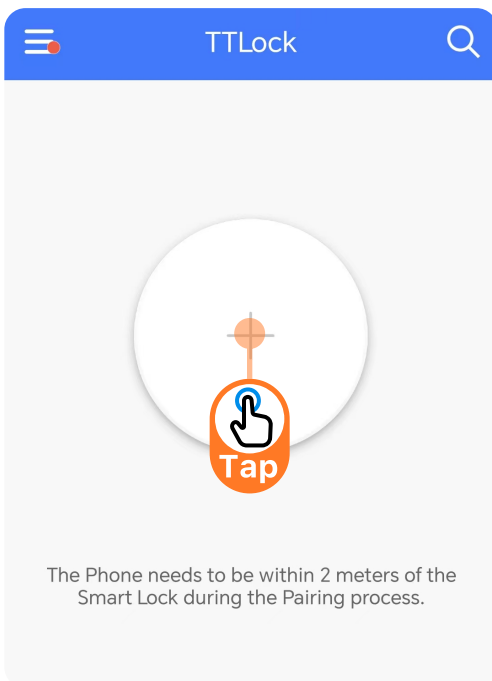
- 2 Sign up for a TTlock account, and add the smart lock to the device list.



- 3 Activate the lock's Bluetooth by touching the lock's keypad.

- 4 Click "+ Add Lock" and select your lock type. Or click "All Locks" if you are not sure.

- 5 Select your lock to pair and assign a name for it.



Bluetooth Unlock

6.2

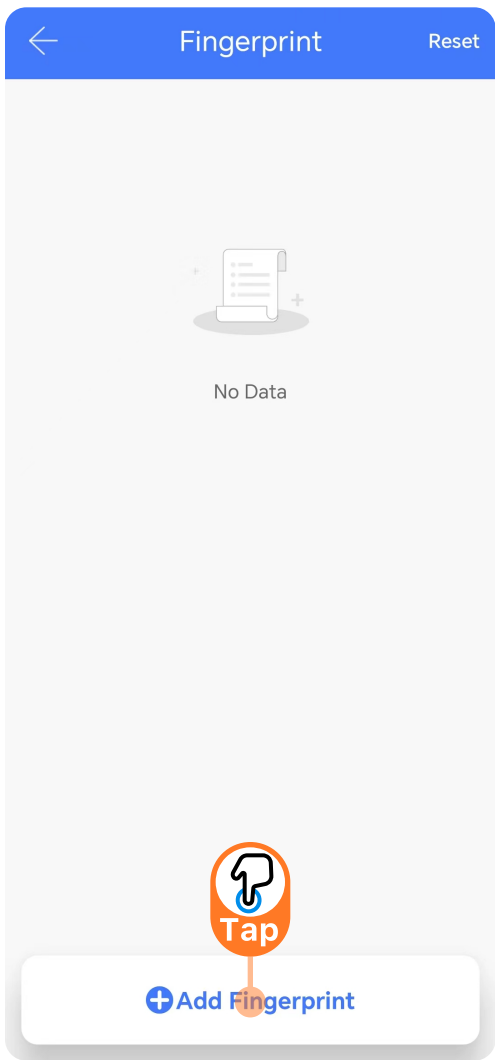
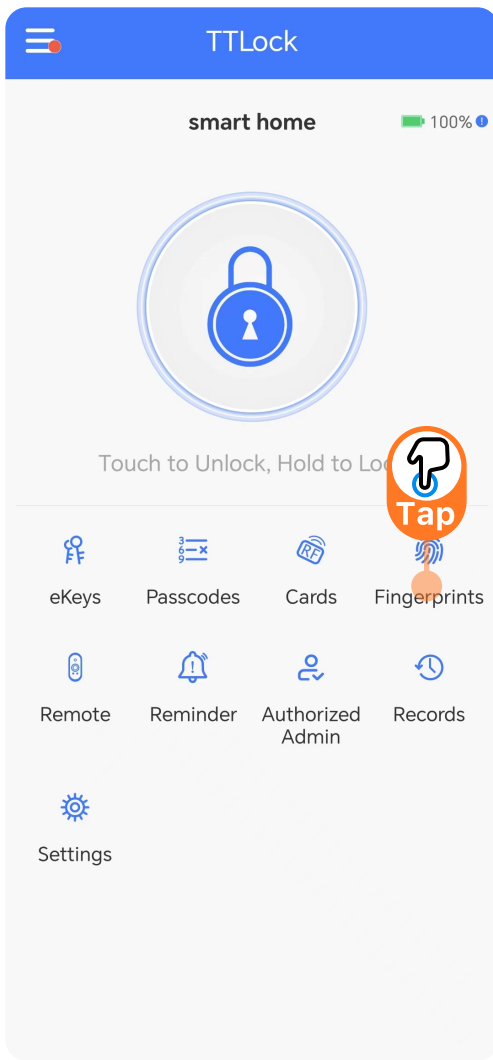
Try to open the lock by tapping on the lock icon. Please ensure there is no problem with Bluetooth communication, and the phone is within the 5-meter range of the Apollo Lock.

Add Fingerprints

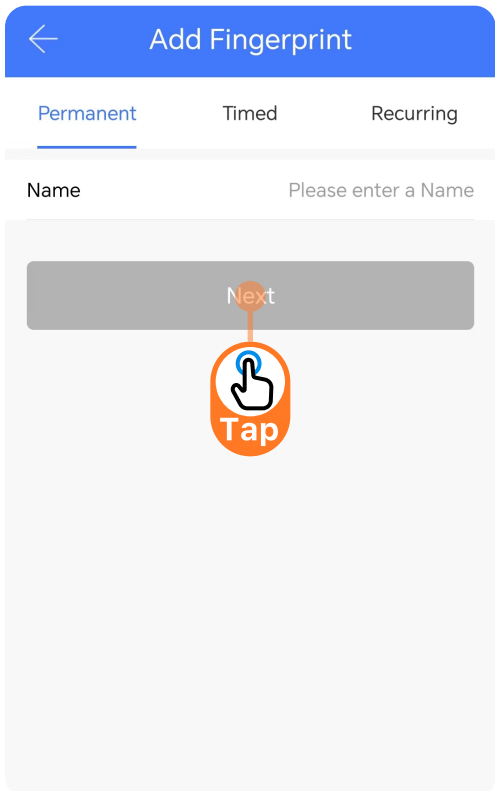
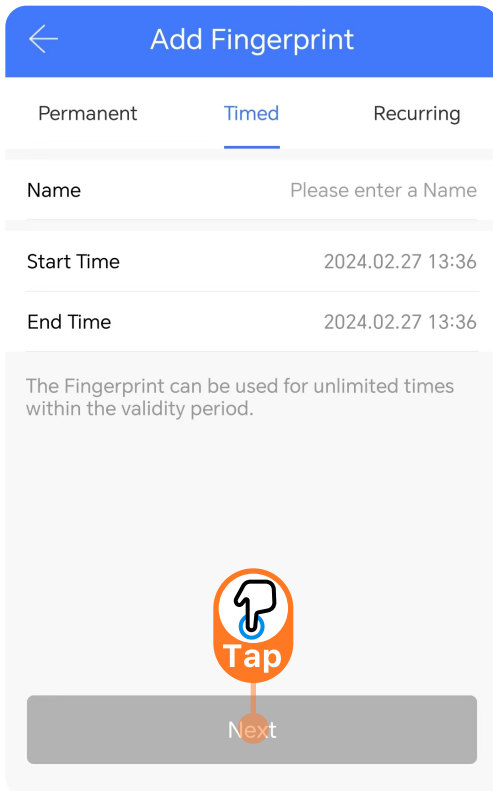
7

① Click "Fingerprints".

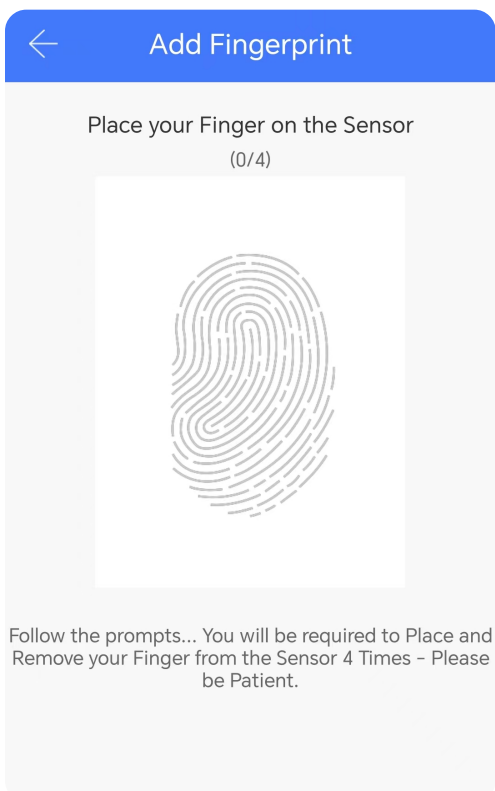
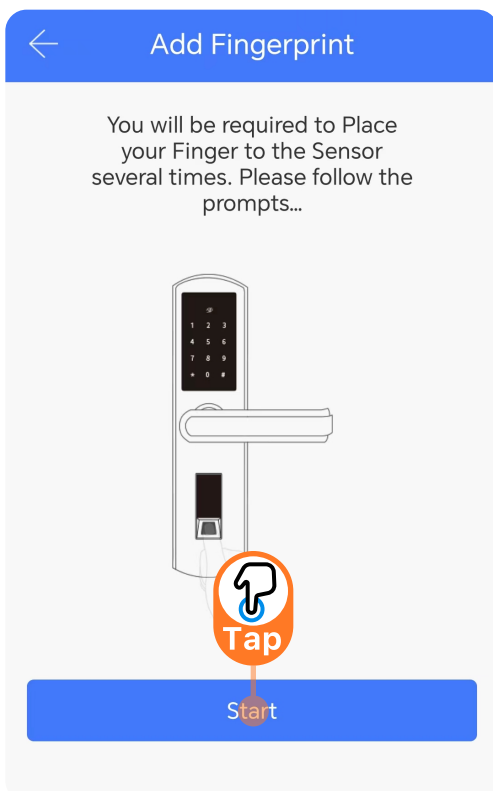
② Click "Add Fingerprints".



③ Enter the name of the fingerprint and select whether it is permanent or temporary access, then click "Next".



④ Click "Start", enter the fingerprint four times according to the voice prompt, and there will be a successful voice prompt after the input is completed.



Add Passcodes

8.1

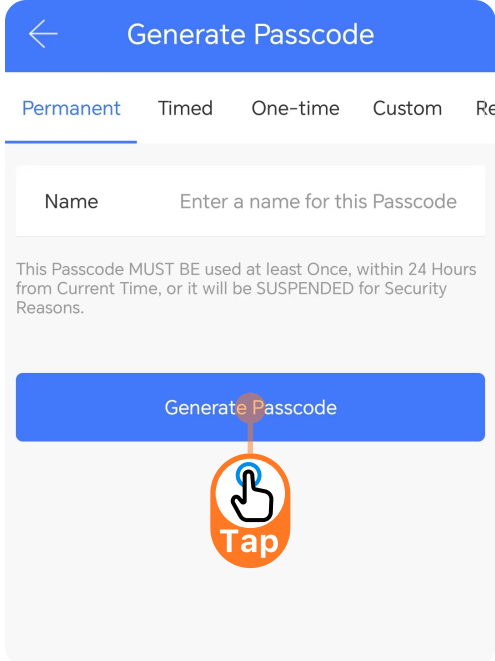
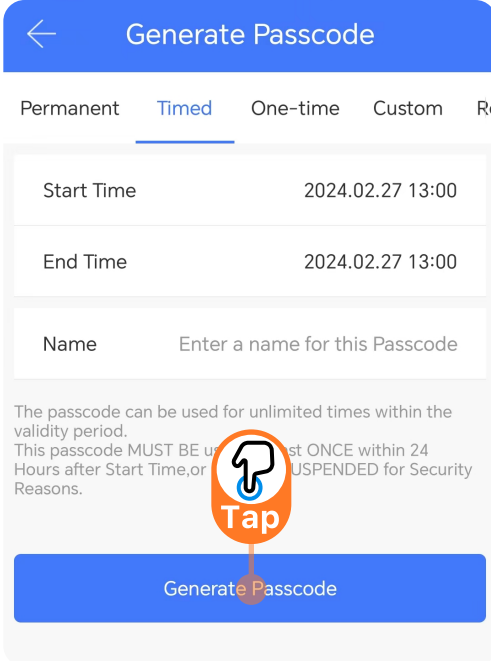
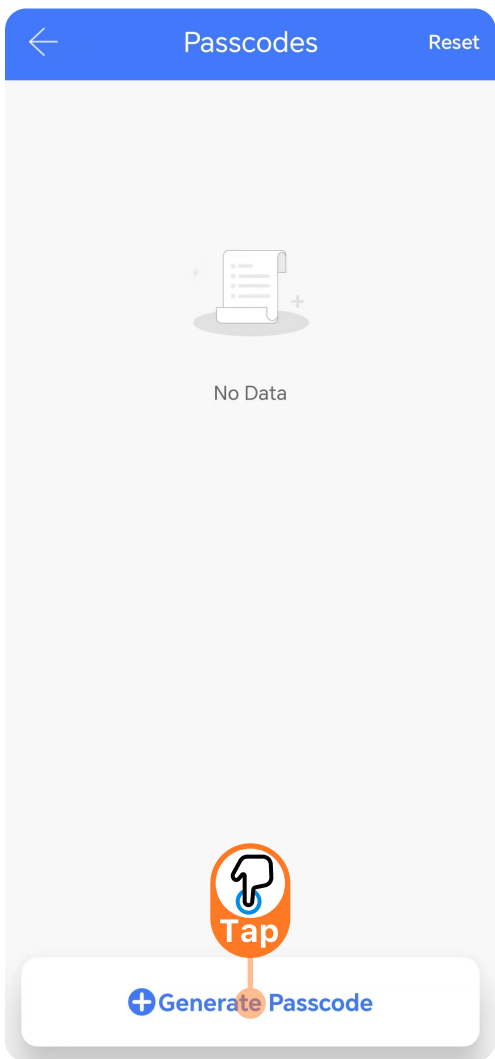
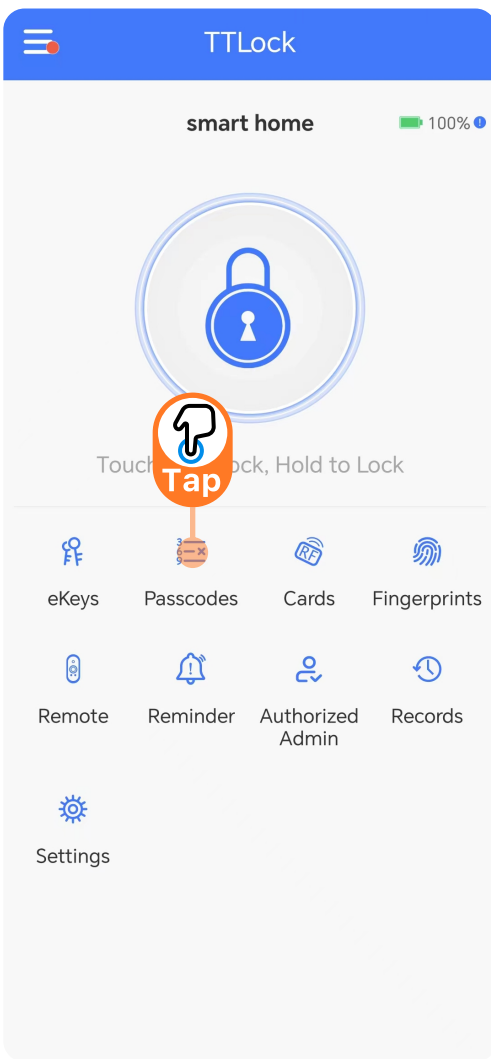
You can create different passcode types on Apollo: permanent, time-limited, OTP(one-time passcode), recurring or custom.

You can easily share the passcode with other users via SMS, Email or WhatsApp.

You can create, share and delete a passcode via the app when you are near the lock. You can even do so remotely with a Wi-Fi bridge/gateway. Please refer to the Wi-Fi bridge/gateway section for more information.

To add a passcode:

- ① Touch the keypad to wakeup the handle/lock.
- ② Enter the generated passcode (use default passcode 123456 for first time).
- ③ Press # on keypad.
- ④ Enter the App interface and click on Passcodes.
- ⑤ Select the passcode type to be generated, such as Permanent/Timed/One-Time etc.
- ⑥ Enter the passcode name and click "Generate Passcode".

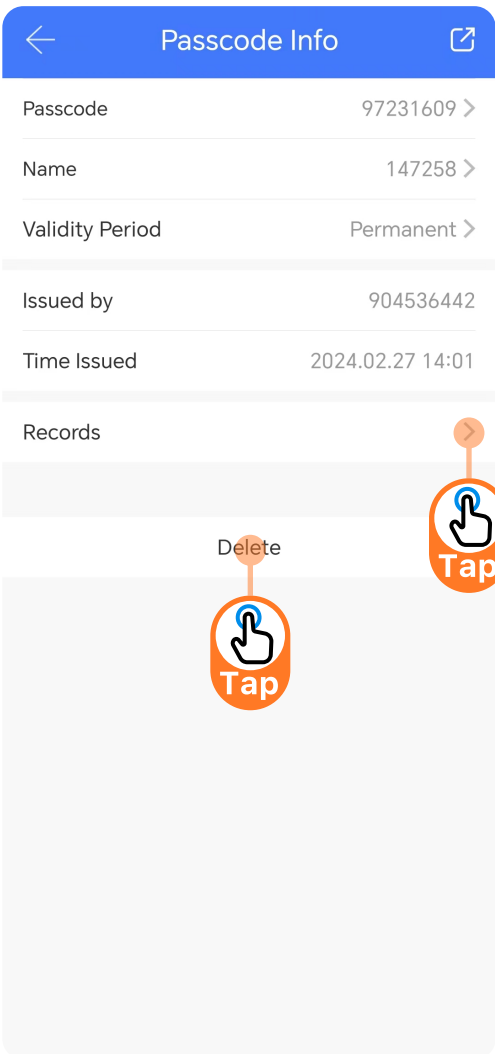
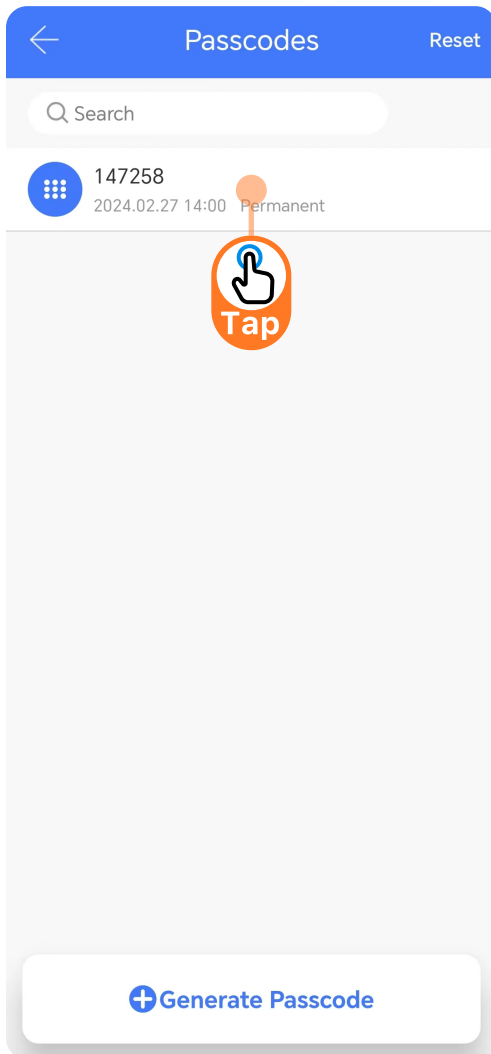


Passcode Management

8.2

Click on "Passcodes". In this section, the Admin user can:

- ① Change, delete or reset passcodes.
- ② Review the unlock records of passcodes.



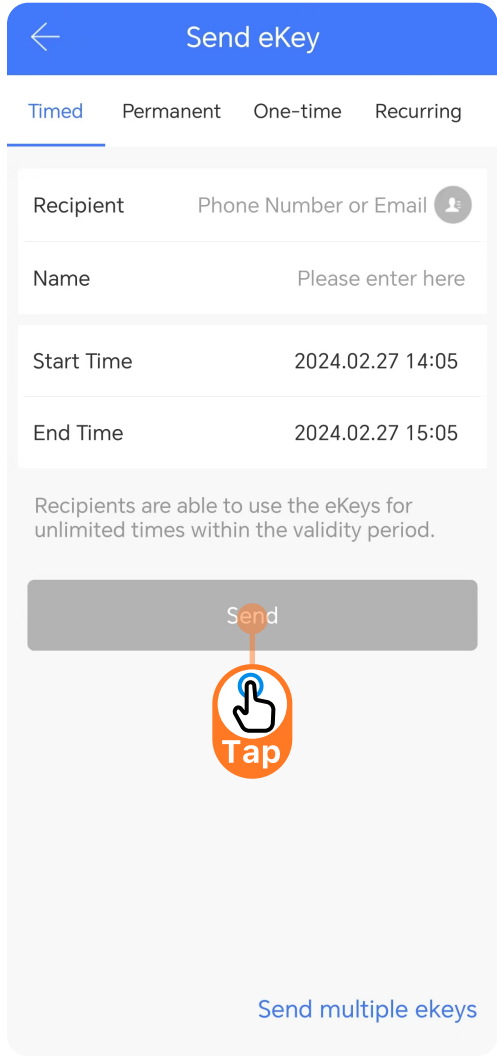
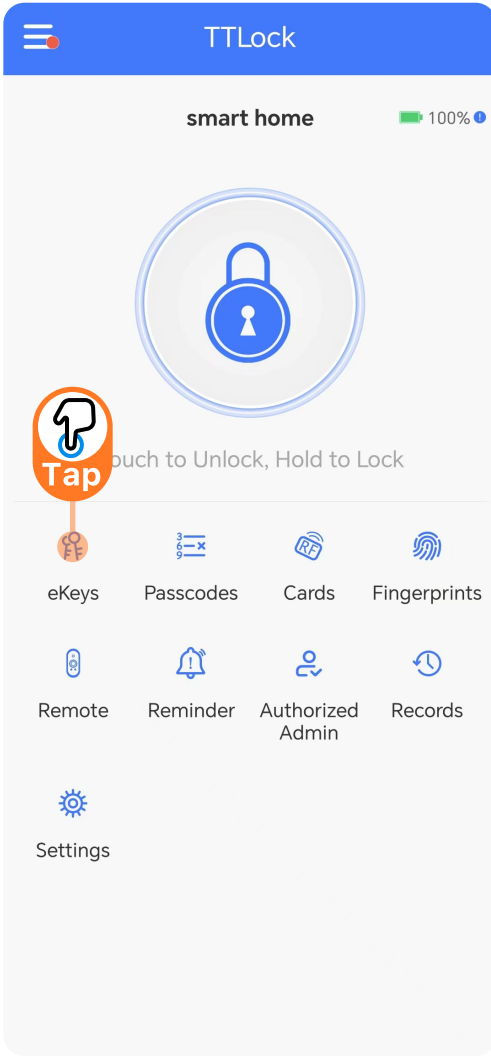
Create and Send e-Keys

9.1

By selecting the 'e-Keys' in the app, you can create and share an electronic key with your friends, family members, or guests. For using the e-Key, they need to download the app and sign up for a new account.

e-Keys are also available in different types: Permanent, Time Limited, One-time or Recurring.

You can authorise a user as Admin in the Authorised Admin section.

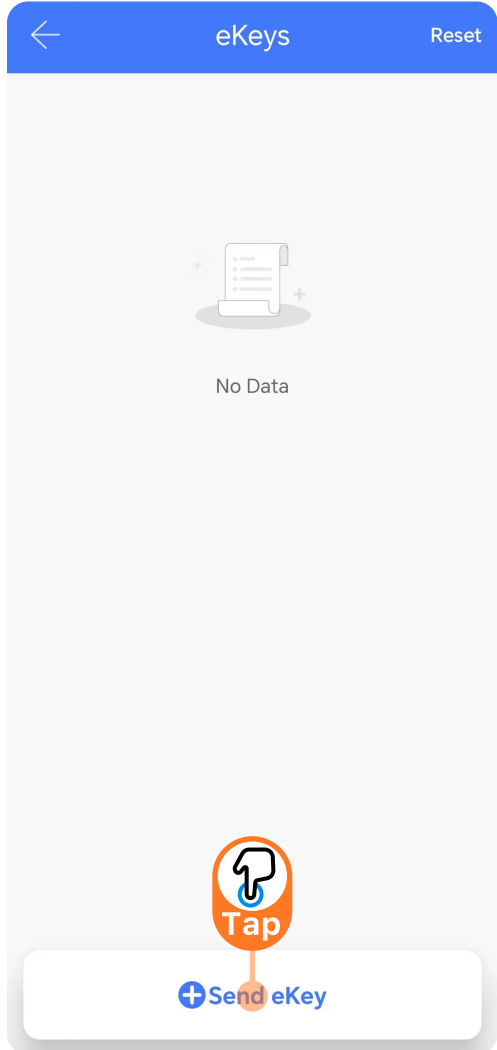
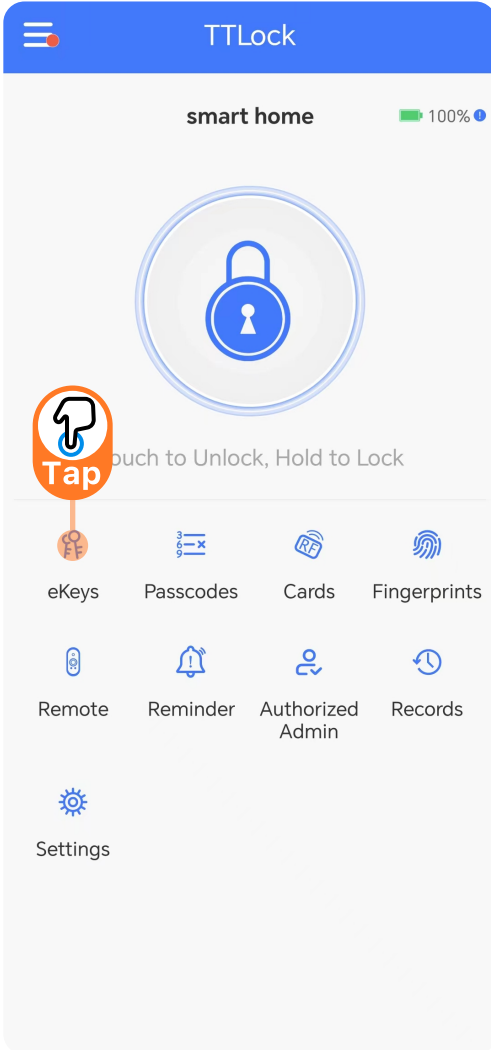


e-Keys Management

9.2

Click on eKeys. In this section, the Admin user can:

- ① Reset or delete e-keys.
- ② Review the access records.

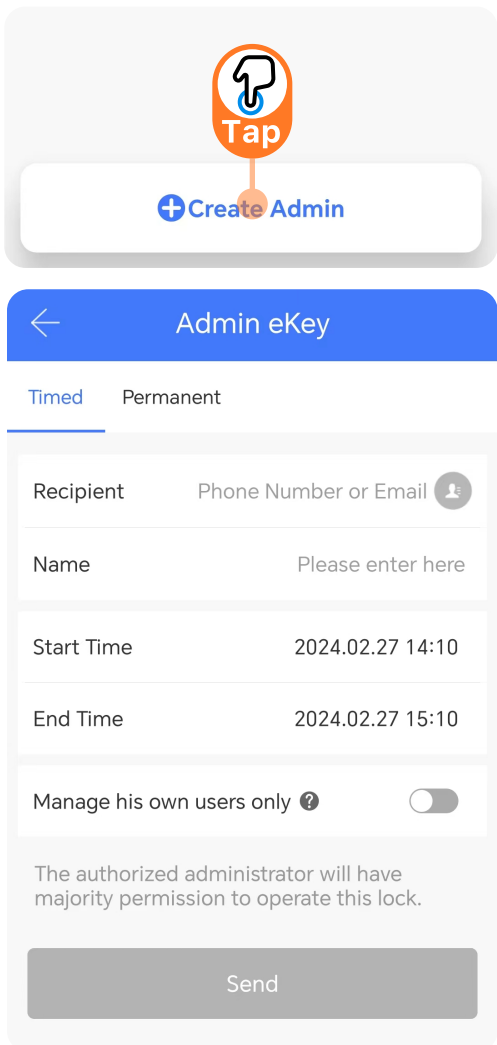
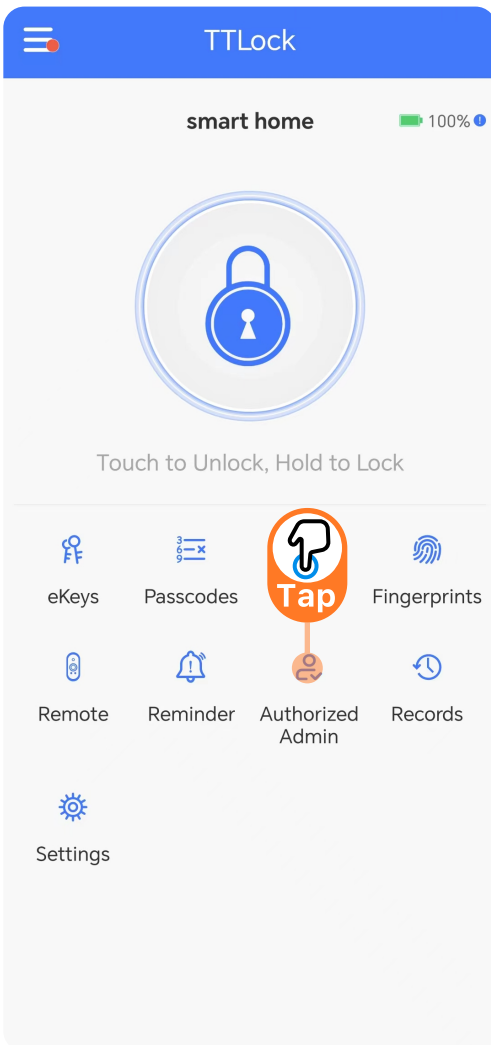


Create Admin

9.3

With this feature, you can assign a new timed/ permanent admin to have the same level of access to the lock.

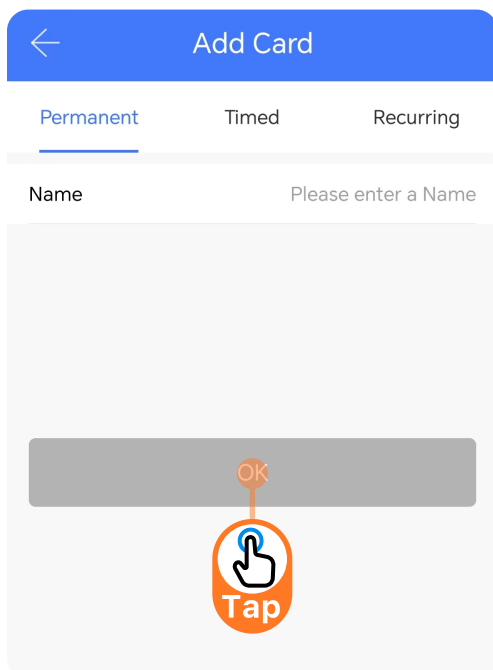
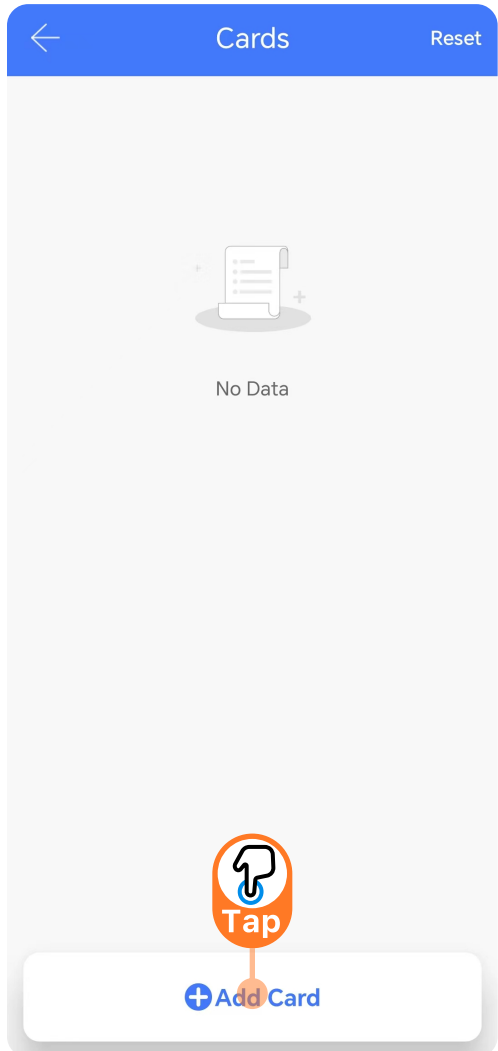
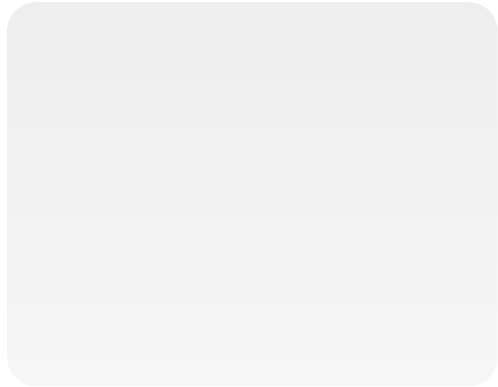
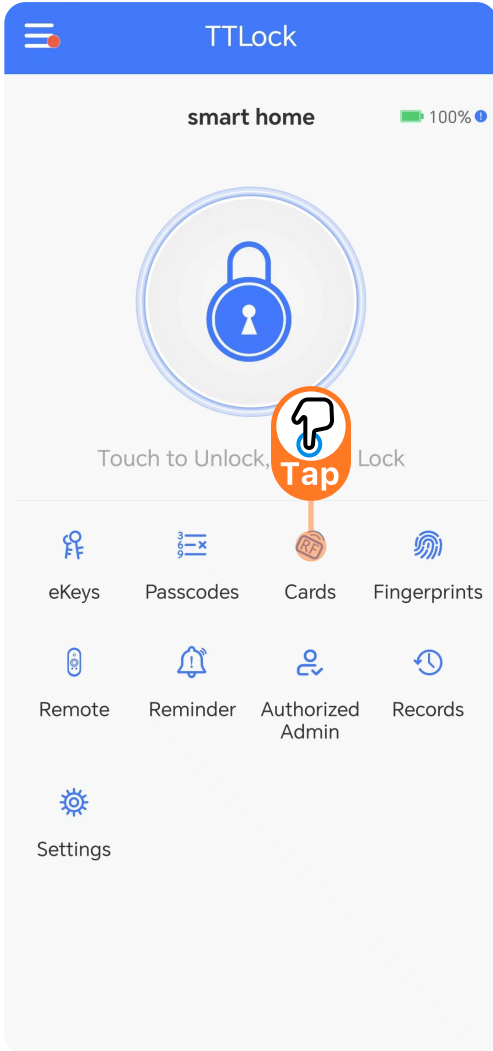
For example, your receptionist or even your guest will be able to add new users and even register their own fingerprint on the smart lock, up to the time their users are valid.



Add Cards

10

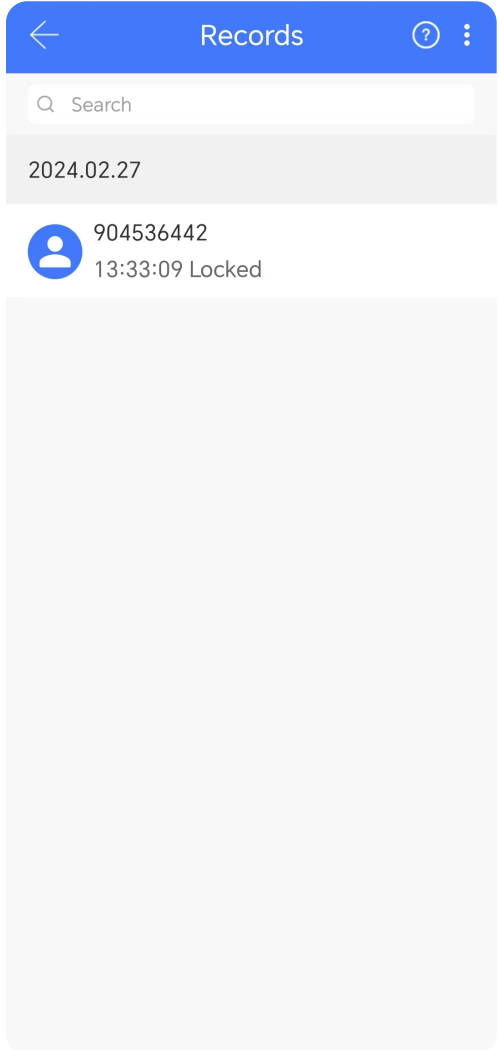
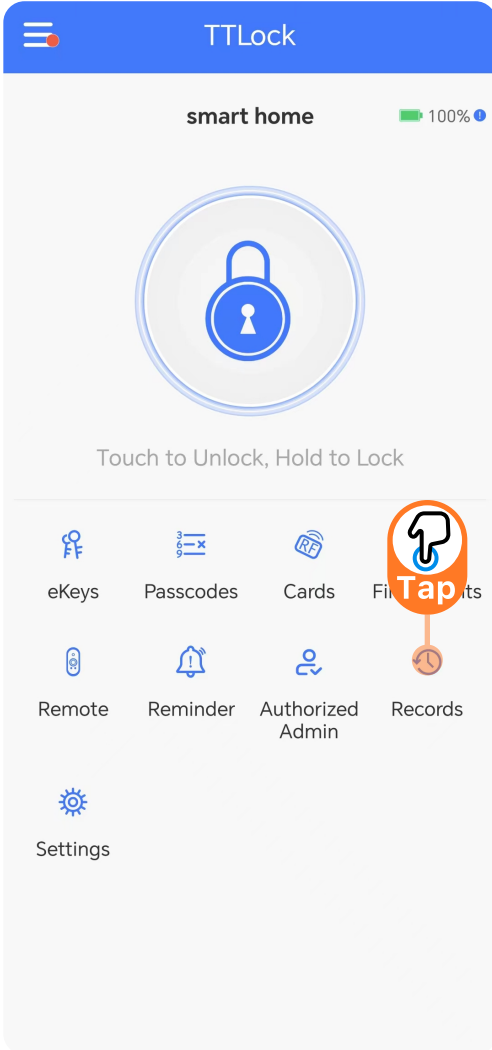
- ① Click "Cards".
- ② Select Permanent/Timed/Recurring type.
- ③ Enter the name and click "OK".
- ④ Place the card on the lock card reading area and there will be a prompt for successful registration.



Unlocking Records

11

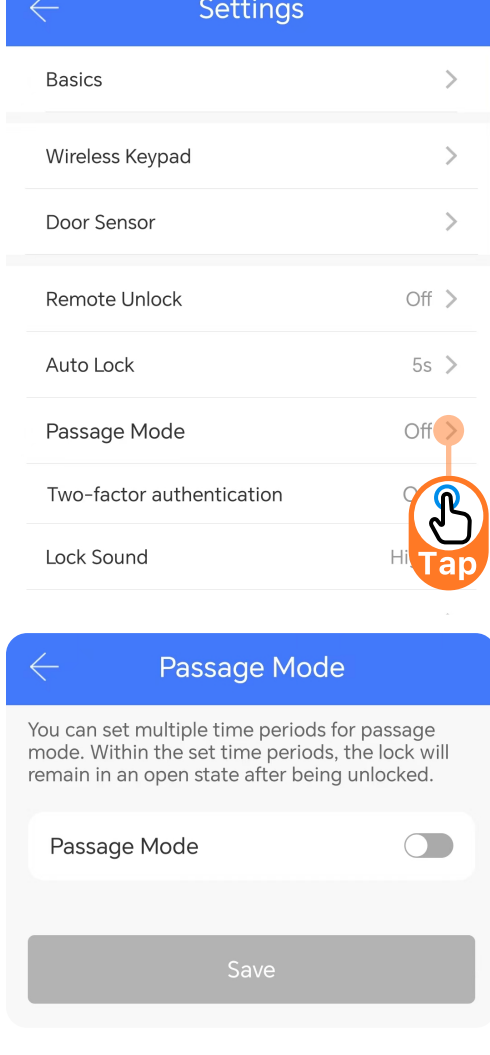
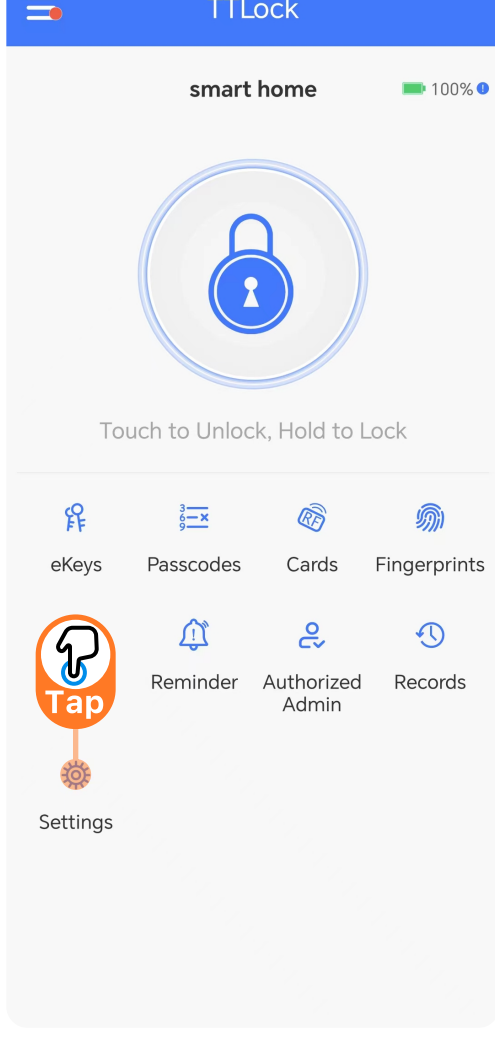
Click "Records" to review all unlock records.



Activate Passage Mode

12.1

- 1 Click "Settings".
- 2 Click "Passage Mode".
- 3 Turn on and click "Save".



Note

To activate the passage mode, you need to unlock it once with the app!

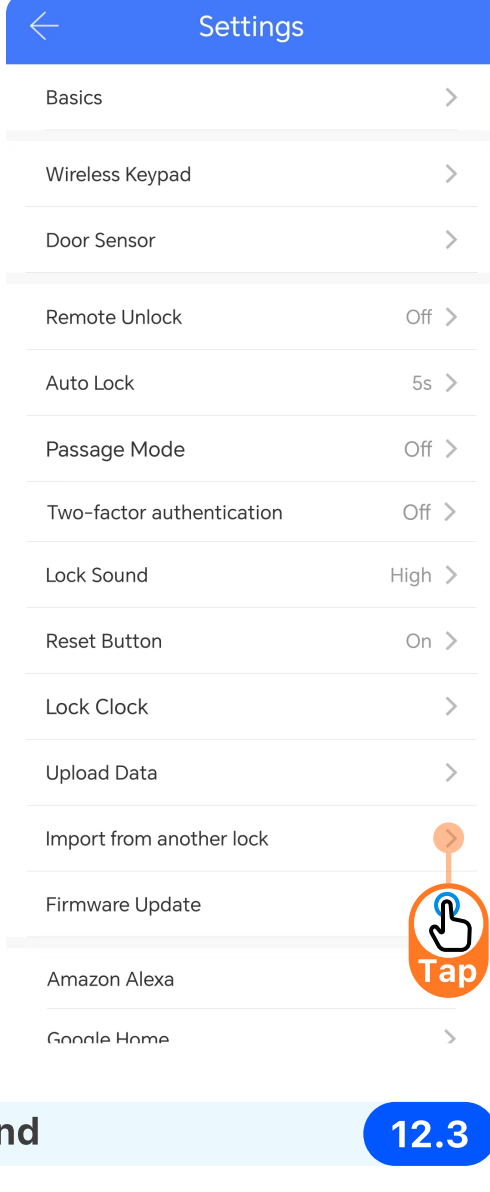
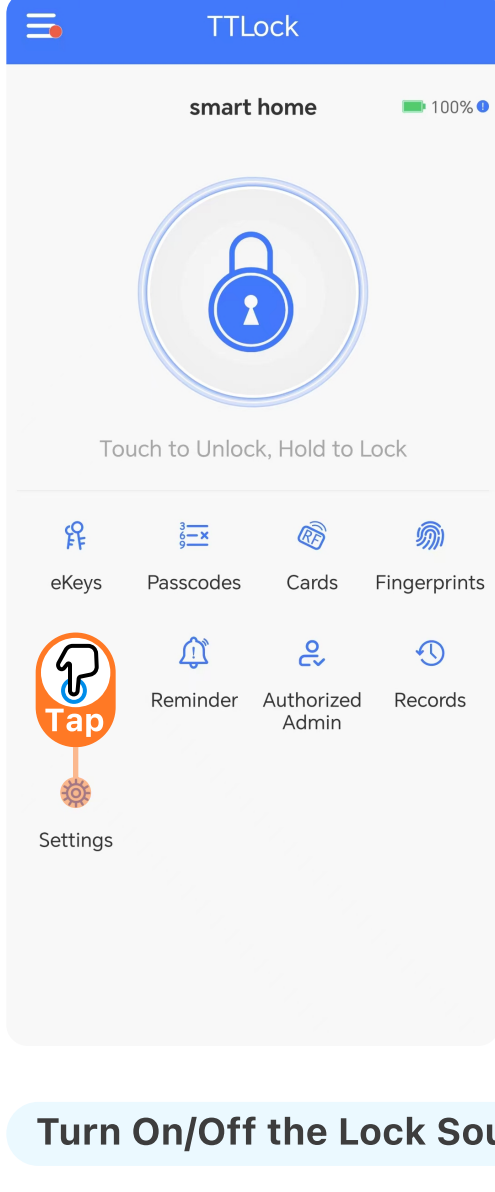
When passage mode is activated, you can long-press # to force-lock the Apollo lock! It's the same when the auto-lock feature is off; you can long-press # to lock the door.

Import Data From an Old Apollo Lock

12.2

To transfer data from an old Apollo lock to a new one you can follow these steps:

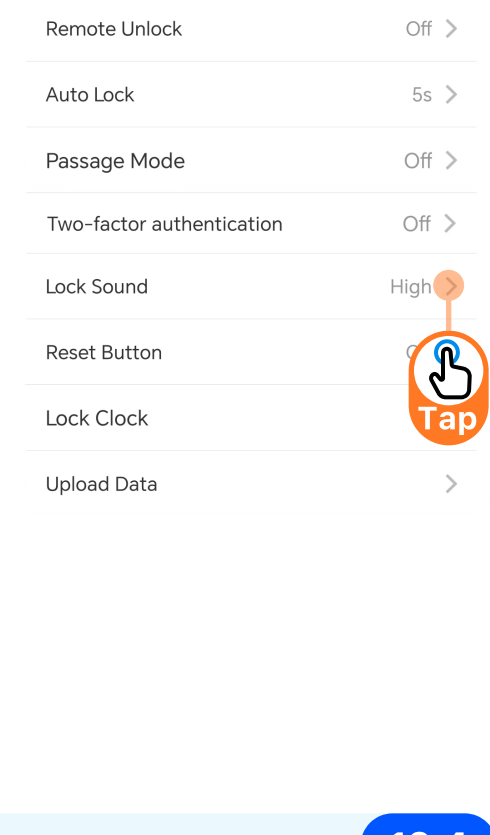
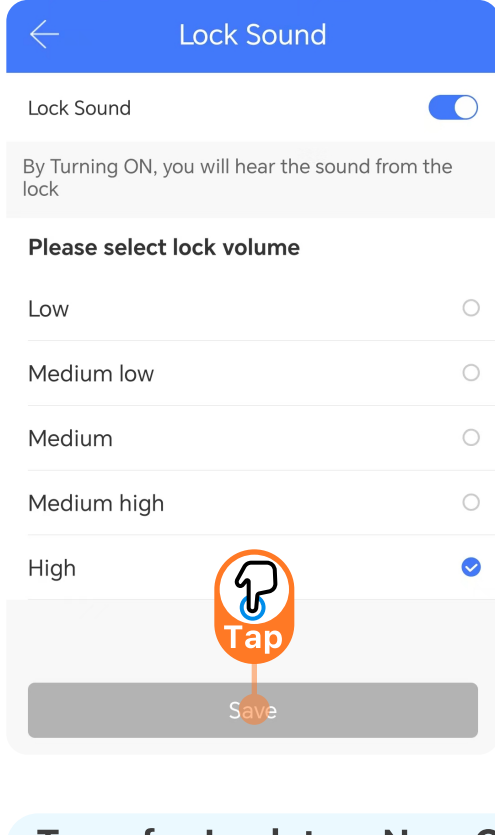
- 1 Choose the new lock on the app.
- 2 Click "Settings".
- 3 Select "Import from another lock"
- 4 Choose your old lock from the list.



Turn On/Off the Lock Sound

12.3

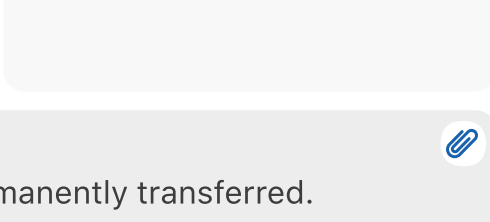
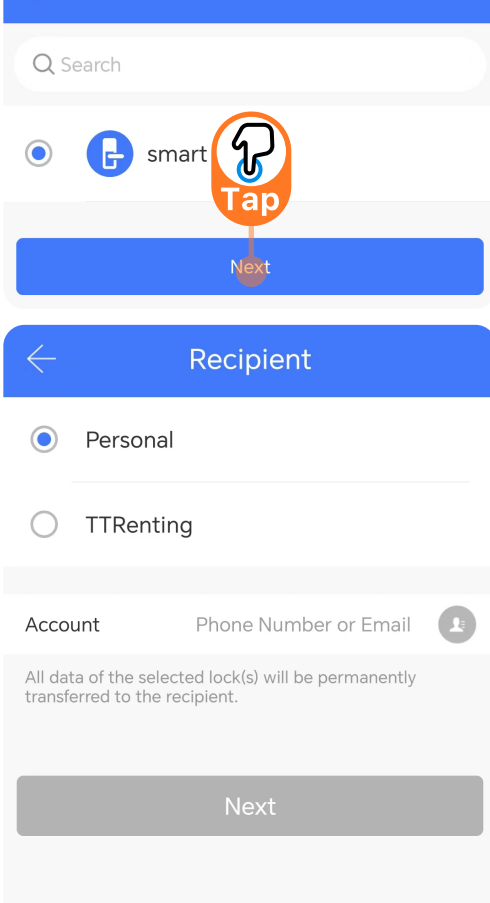
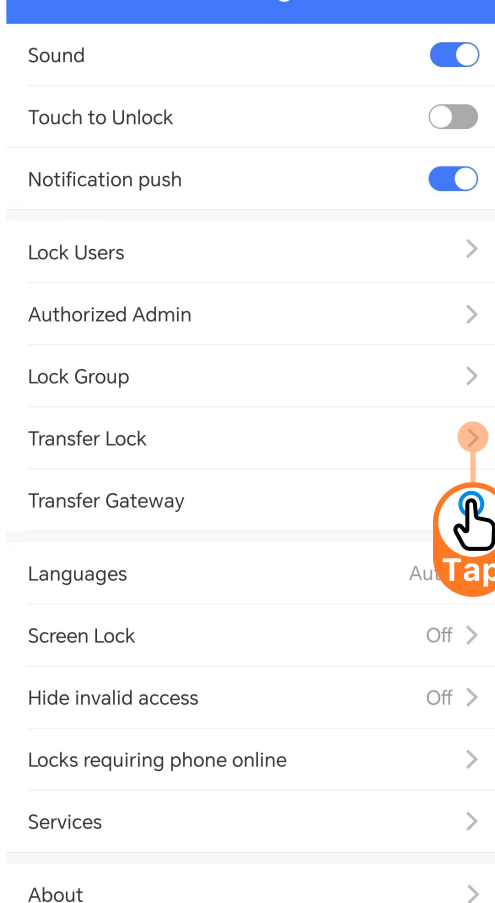
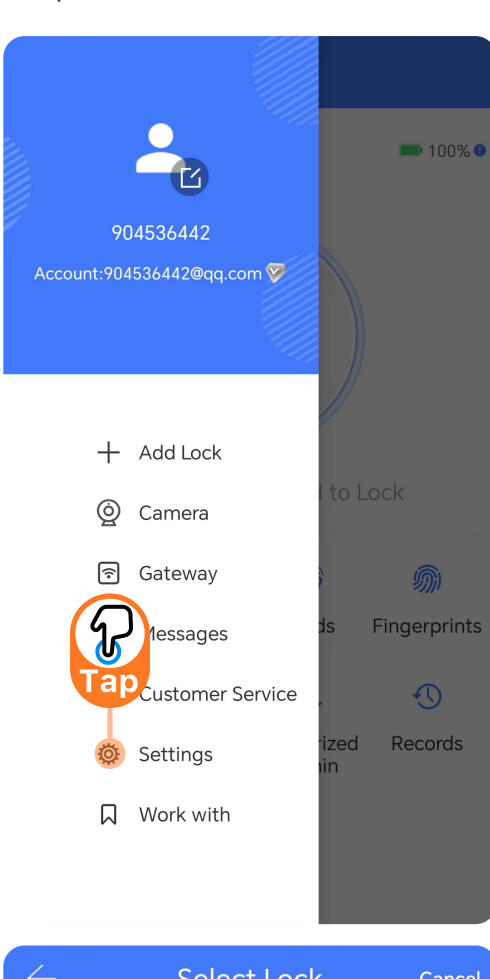
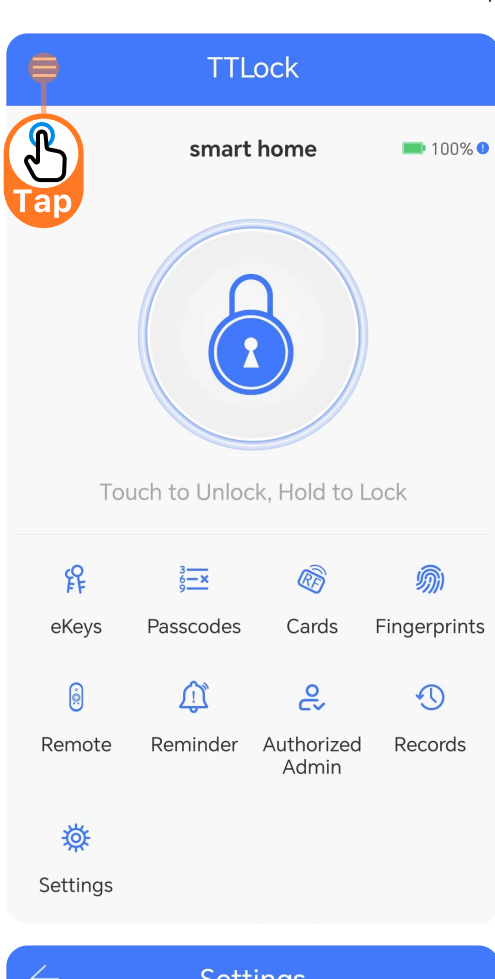
- 1 Click "Settings".
- 2 Turn on/off in the "Lock Sound".



Transfer Lock to a New Owner

12.4

- 1 Open the app.
- 2 Tap on the ☰ (Top Left)
- 3 Click "Settings".
- 4 Tap on "Transfer Lock(s)".
- 5 Select the lock(s) and press Next.
- 6 Enter the new owner Account, and press Next.



Tip

The selected lock(s) will be permanently transferred.

Pair Wi-Fi Bridge/Gateway

13

With the Wi-Fi bridge/gateway, you can:

- Open your lock from anywhere;
- Remotely access to the lock operation records;
- Calibrate the lock clock remotely;
- Remotely delete and modify fingerprints/passcodes/e-keys;
- Use the Apollo lock with your Alexa or Google Home.

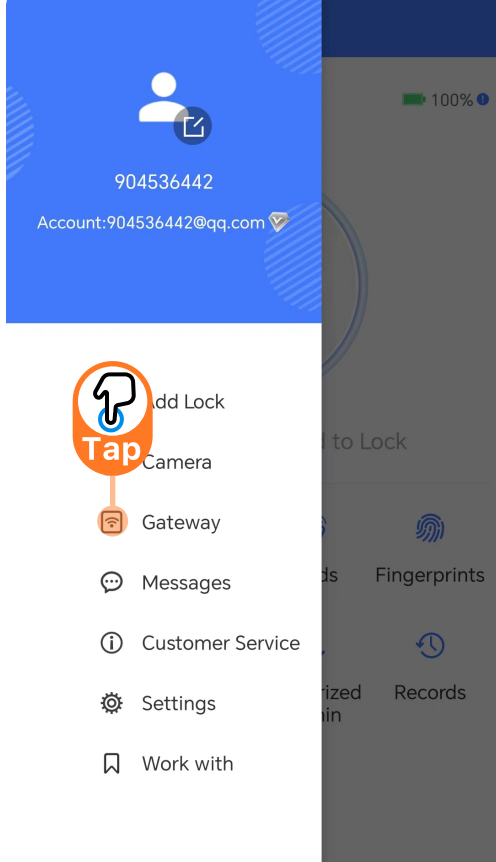
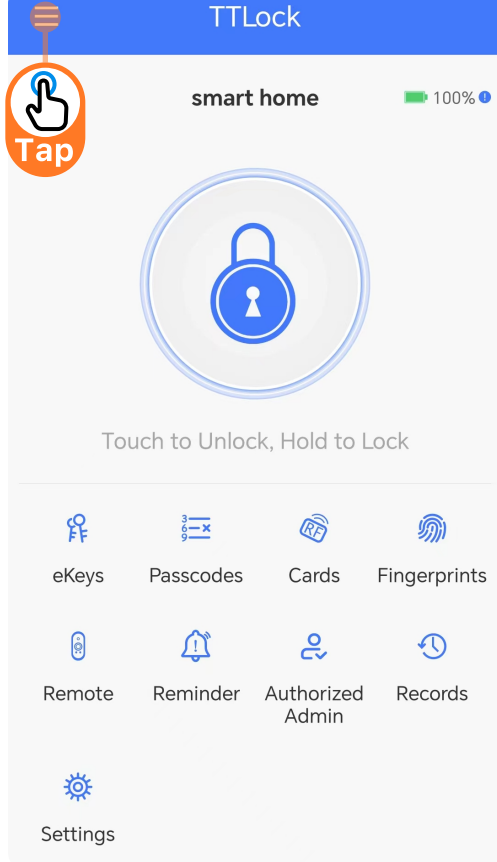


When the Wi-Fi bridge is powered on:

- Light Flashes alternately in Red and Blue: Stand-by mode, ready for pairing
- Blue light: Working mode
- Red Light: Network failure

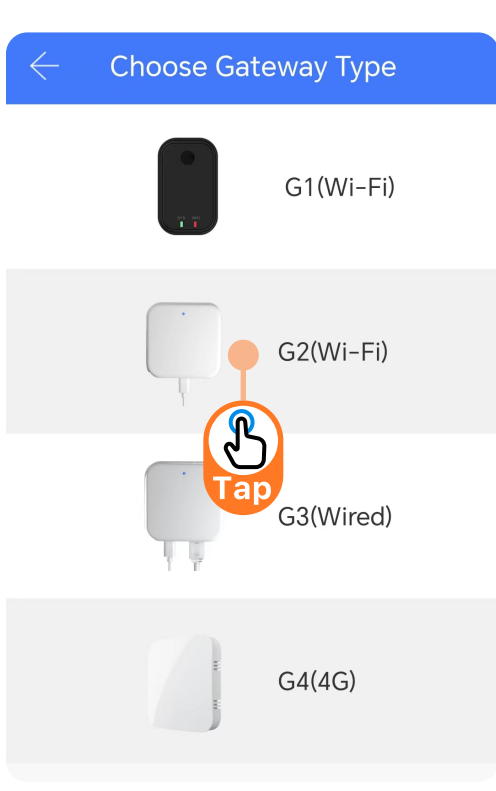
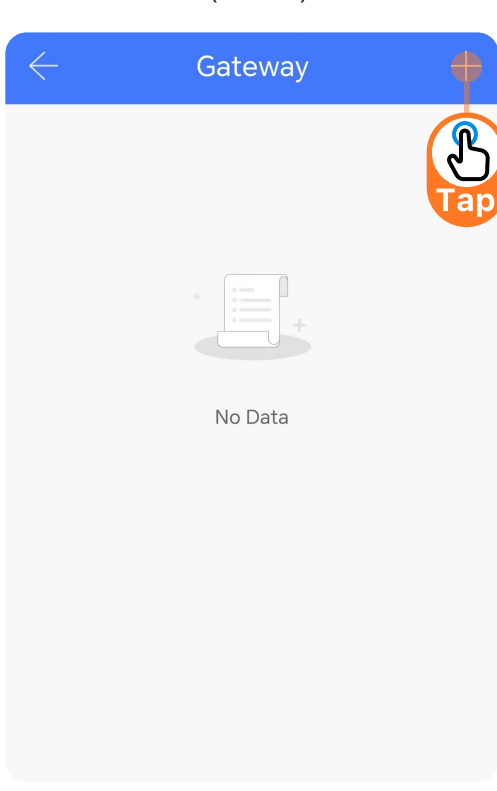
① Open the app and Tap on the (Top Left)

② Select "Gateway"



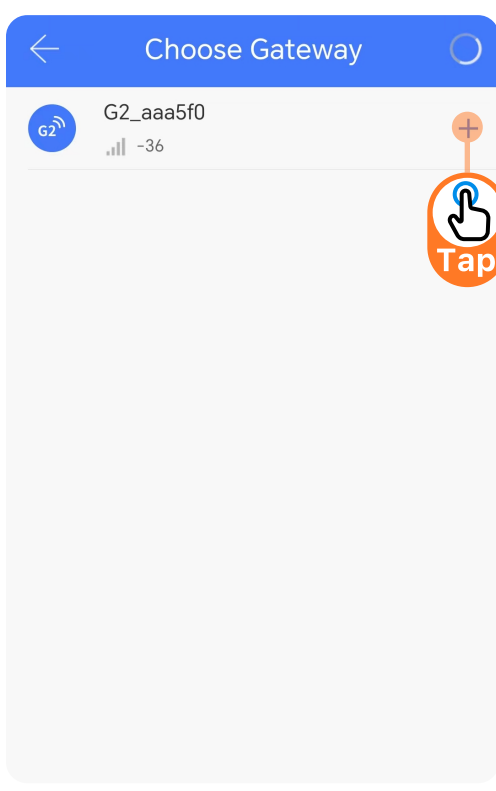
③ Click "+".

④ Select "G2(Wi-Fi)".



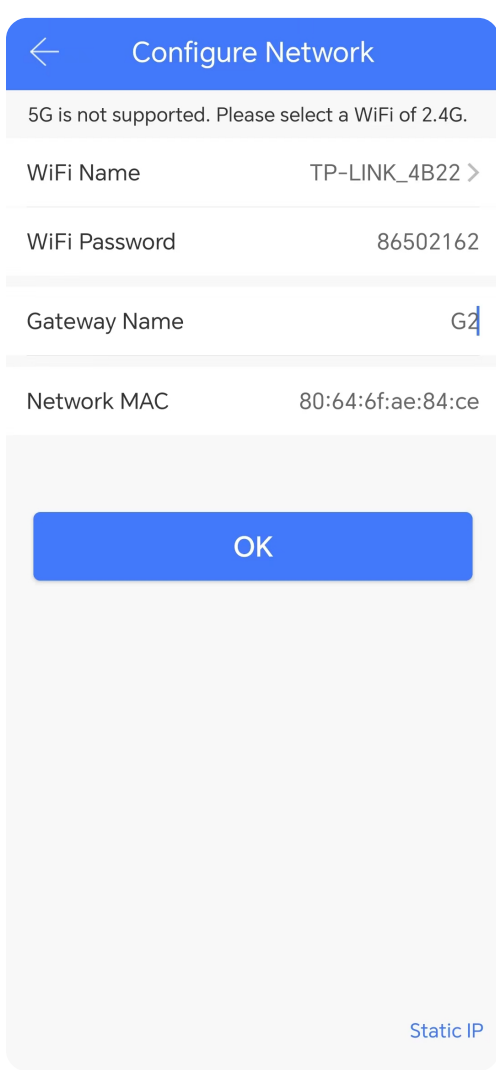
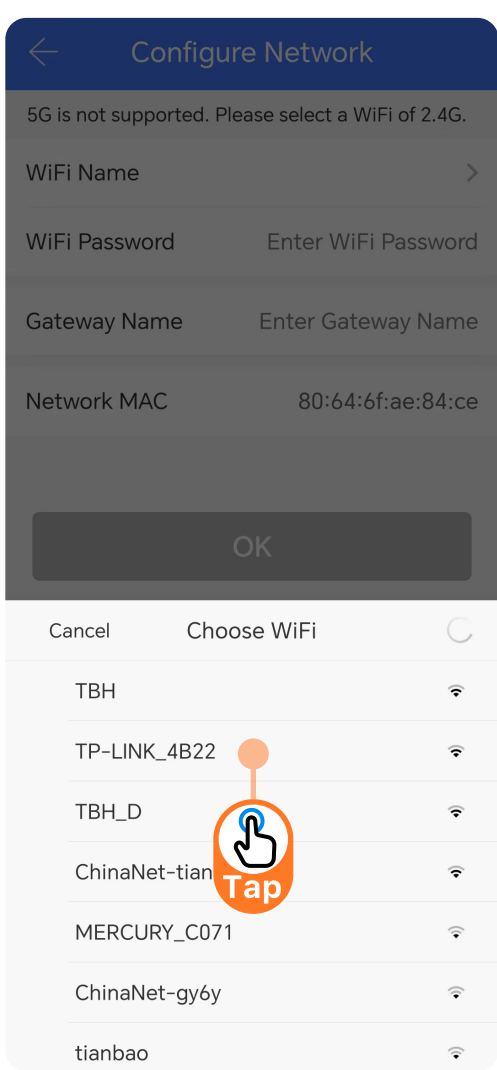
⑤ Power on the gateway and wait till the lights to flash blue and red alternately. Click "Next".

⑥ Click "+".



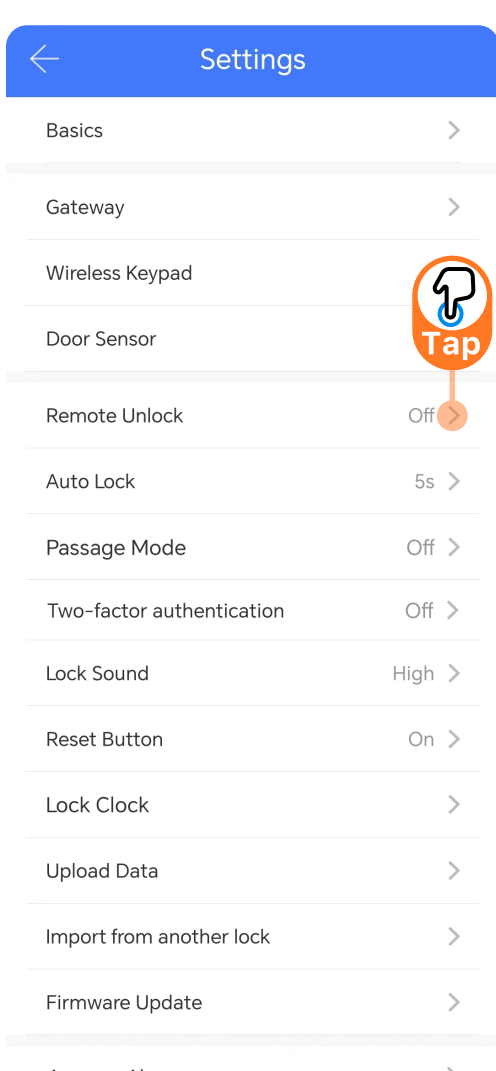
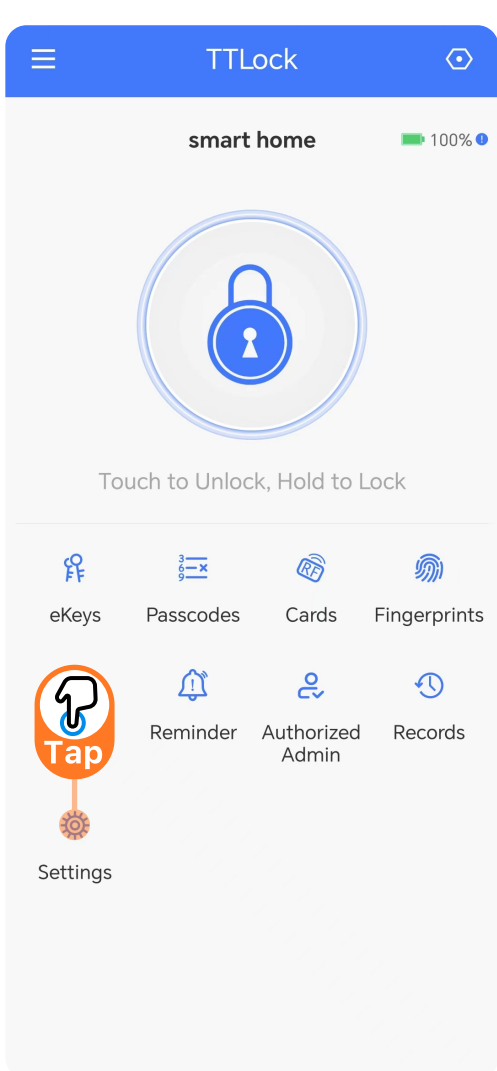
⑦ Select Wi-Fi.

⑧ Enter the Wi-Fi password and gateway name and click OK.

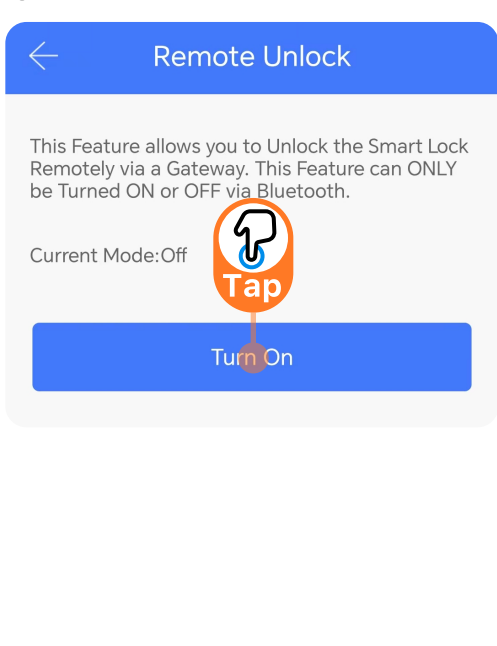


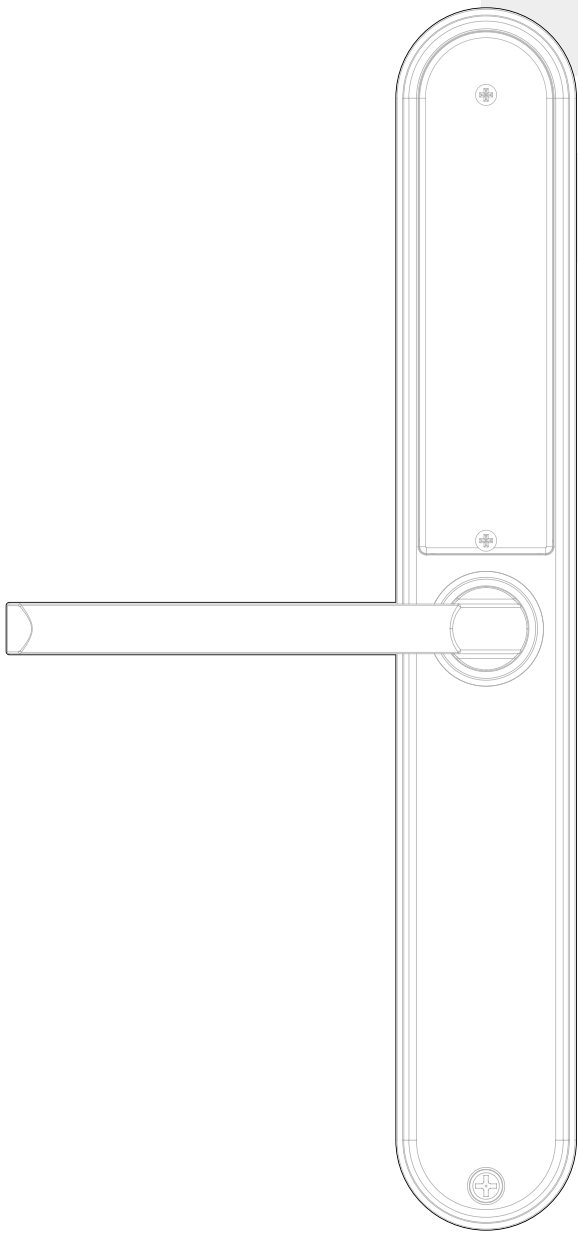
⑨ After the gateway pairing is completed, click "Settings".

⑩ Click "Remote Unlock".



⑪ Click "Turn On".





Please scan the QR to
get the newest
manuals on Blusafe
products



Find out more about
Blusafe vulnerability
discovery & disclosure
procedures