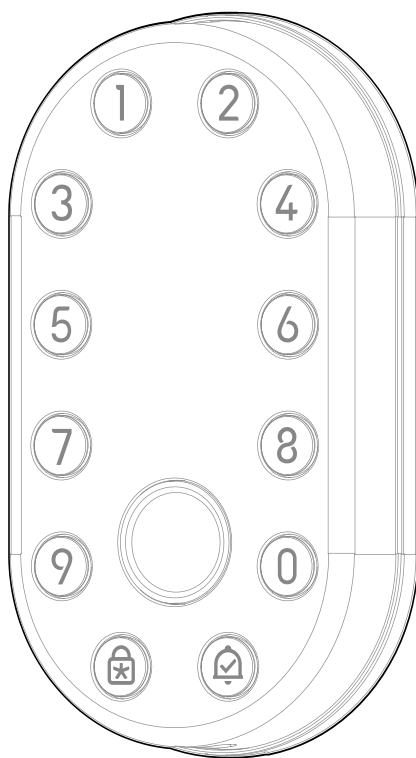


# Yunity

Installation  
Manual

V2024



Do you know we offer  
professional installation  
service?  
Please scan the QR to find  
your local installer



# Table of Contents

What's Included 1

Product Overview 2

Drill Connecting Cable Hole 3.1

Install the Cylinder 3.2

Prepare the Internal Panel 3.3

Check Existing Screw Holes 3.4

Install Screw Stub C 4a.1

Prepare the Fixing Screws 4a.2

Install the External Panel and Mounting Plate 4a.3

Install Screw D 4b.1

Install the Adaptor and Cylinder Sleeve 4b.2

Remove the Sleeve and Cylinder 4b.3

Install the External Panel 4b.4

Install the Mounting Plate 4b.5

Cut the Cylinder Sleeve 5.1

Connect the Cable 5.2

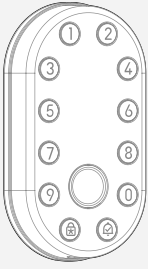
Install the Internal Panel 5.3

Install the Batteries 5.4

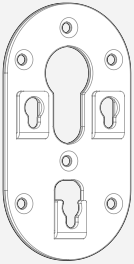
Install the Battery Cover 5.5

# What's Included

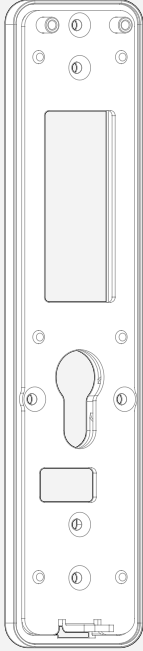
1



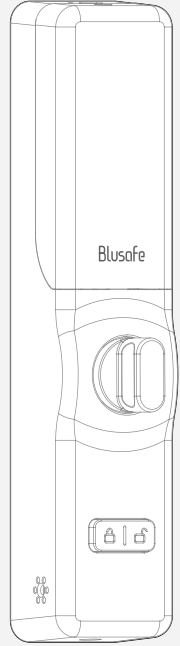
External Panel



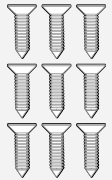
Adapter



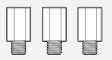
Mounting Plate



Internal Panel



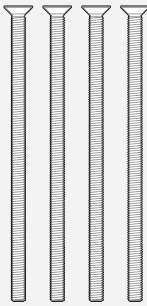
⊕ B x 9



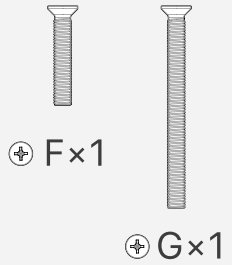
⊙ C x 3



⊖ D x 3

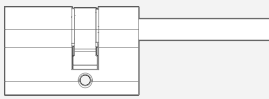
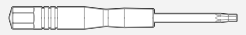


⊕ E x 4

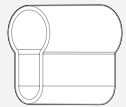


⊕ F x 1

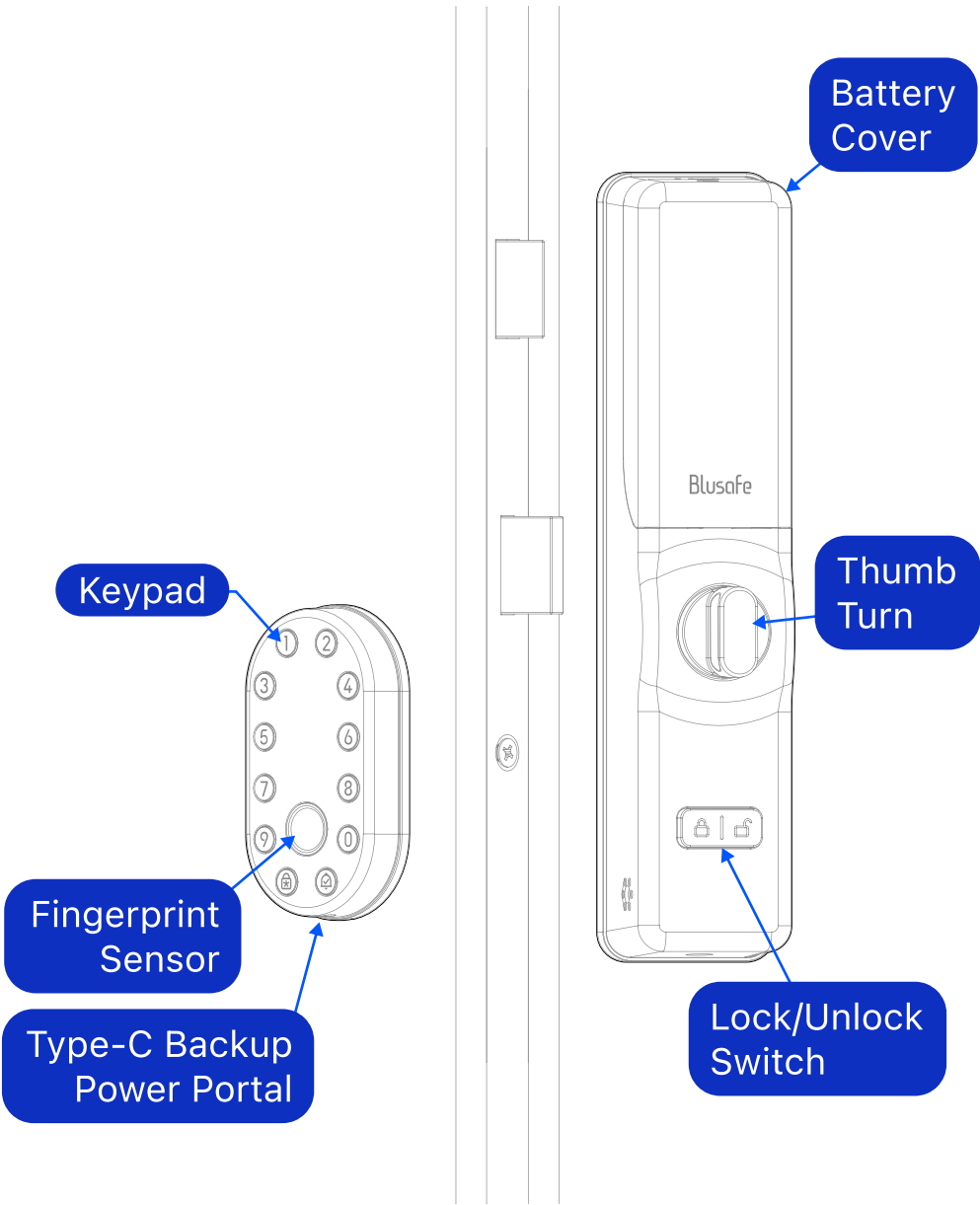
⊕ G x 1



Cylinder



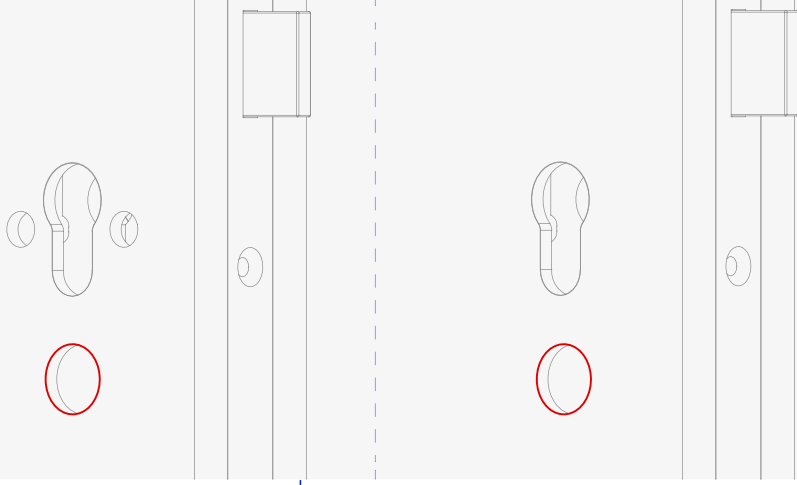
Cylinder Sleeve



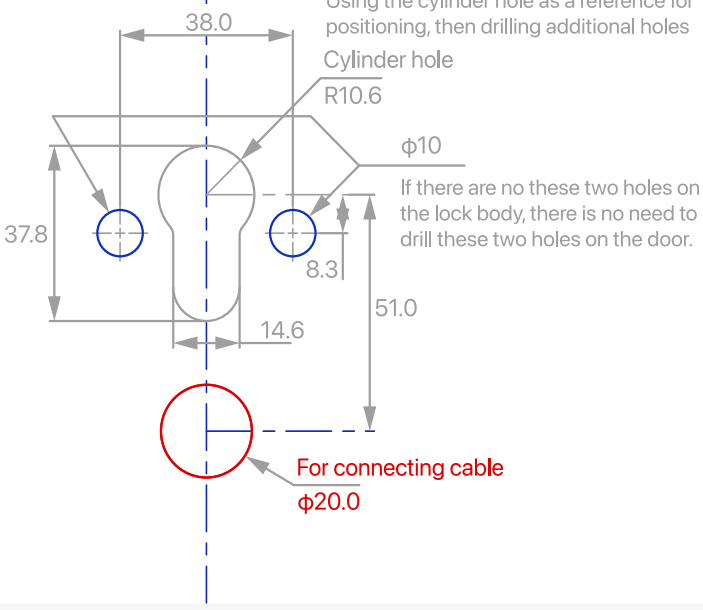
### Drill Connecting Cable Hole

3.1

Use the template provided to drill a hole with a diameter of  $\phi 20$  on the door.



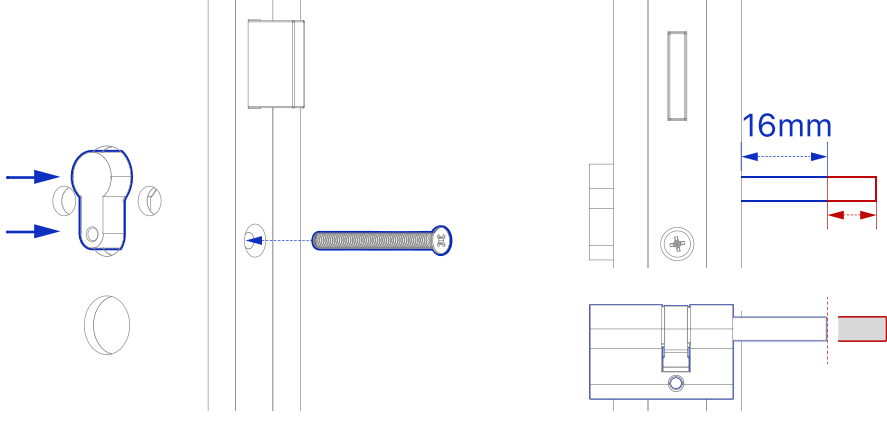
Yunity Installation Template Guide  
Proportion: 1:1 Unit: mm



### Install the Cylinder

3.2

1. Install the cylinder and secure it with screw G.
2. Mark on the tail bar 16mm protruding from the door. Remove the cylinder, and cut the cylinder tail bar accordingly.



### Warning!

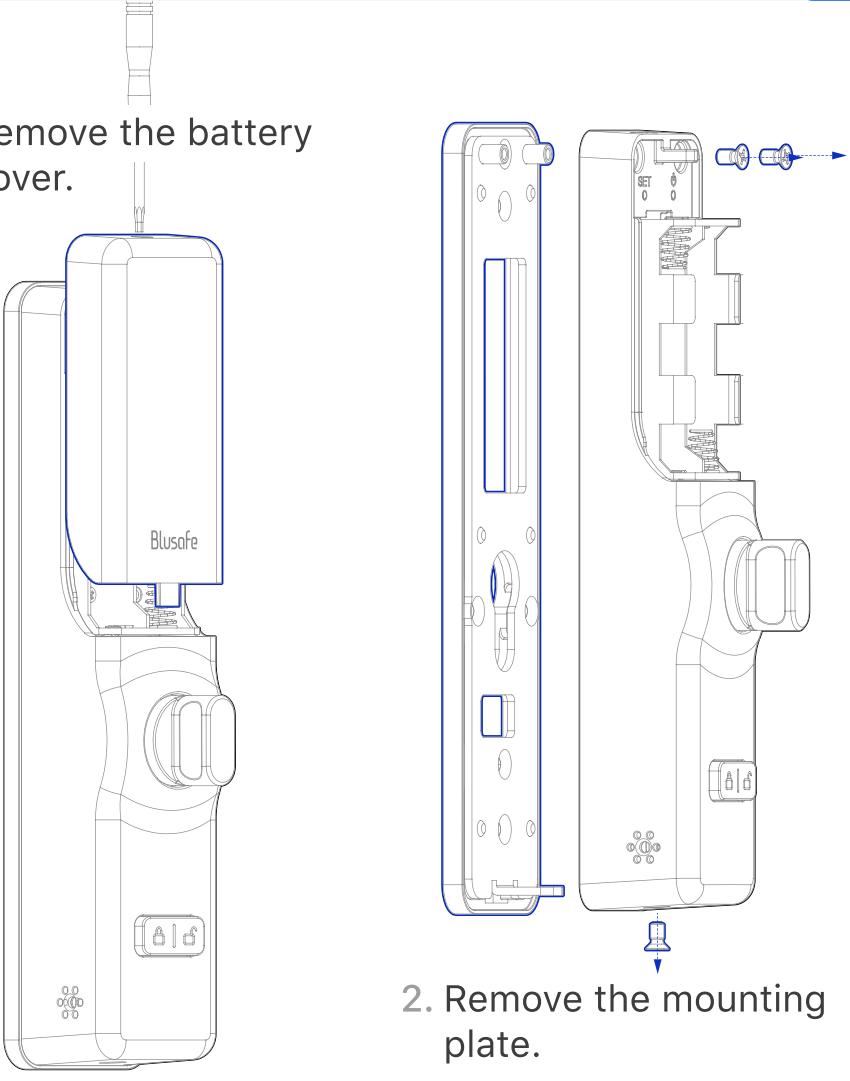
Do NOT cut the tail bar shorter than 14mm!



### Prepare the Internal Panel

3.3

1. Remove the battery cover.

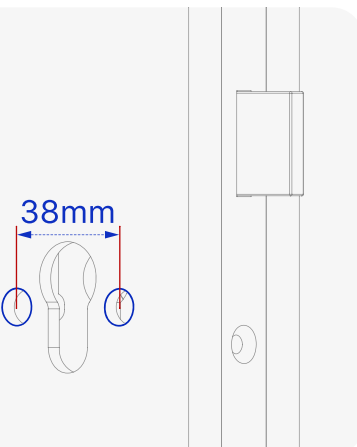


2. Remove the mounting plate.

### Check Existing Screw Holes

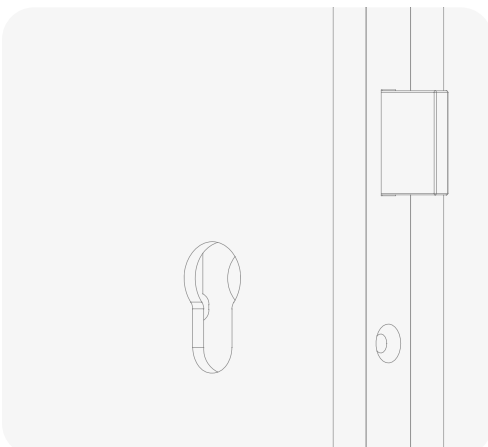
3.4

Are there two screw holes with centre distance 38mm on the door as illustrated?



**YES**

Please proceed to next step.



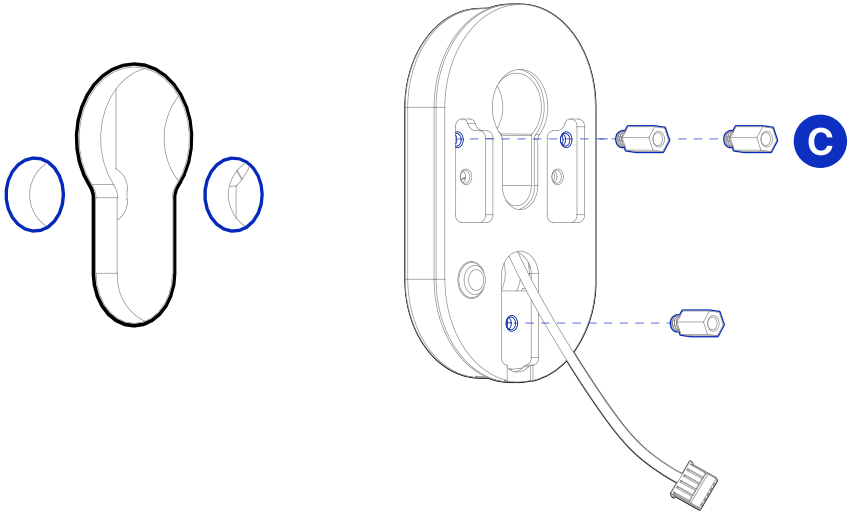
**NO**

Please proceed to step 4b.

## Install Screw Stub C

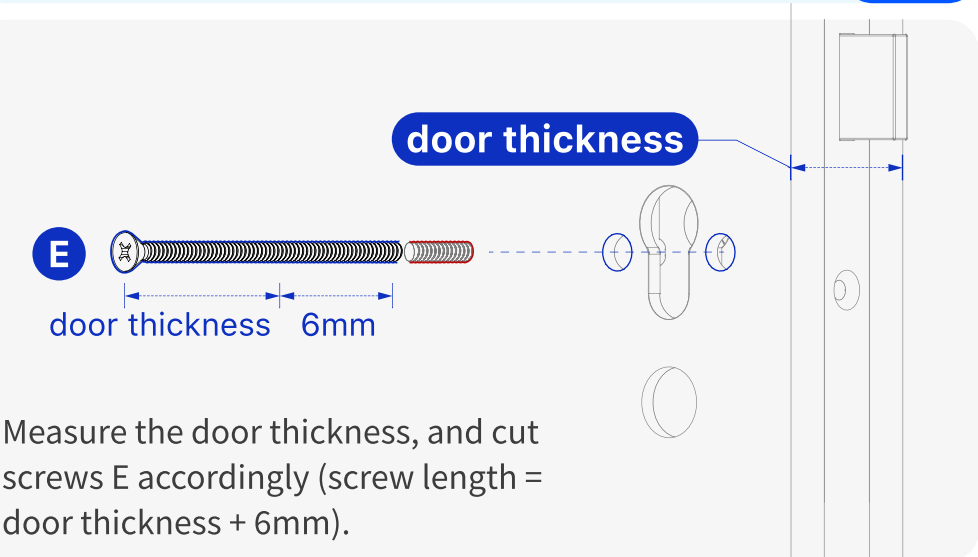
4a.1

Install 3 screw stub C onto the back of external panel.



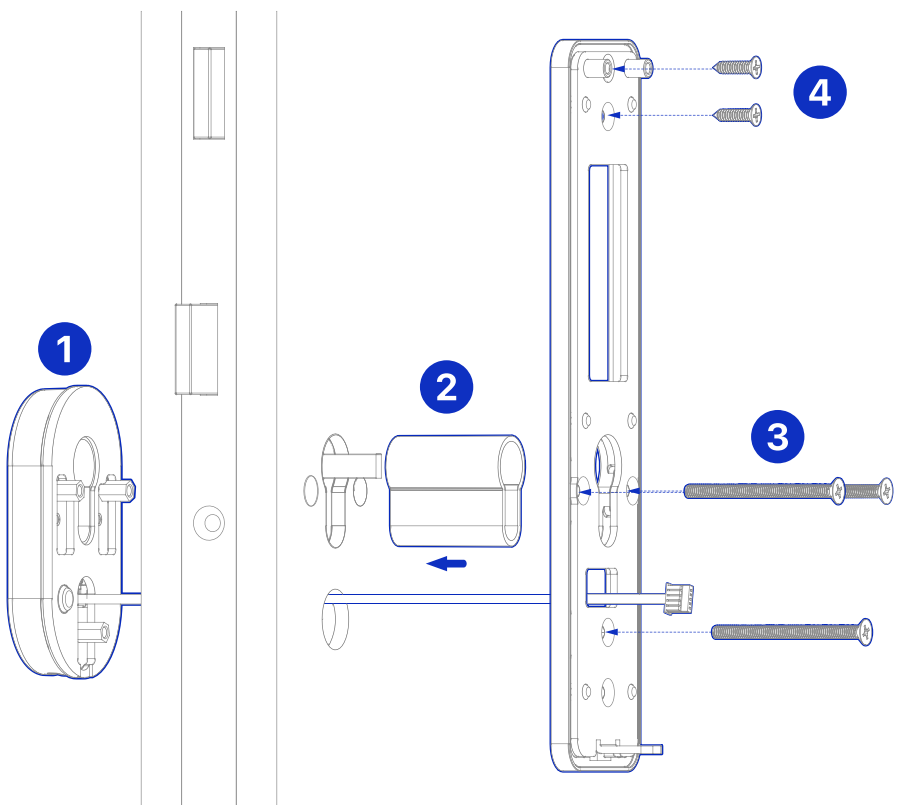
## Prepare the Fixing Screws

4a.2



## Install the External Panel and Mounting Plate

4a.3



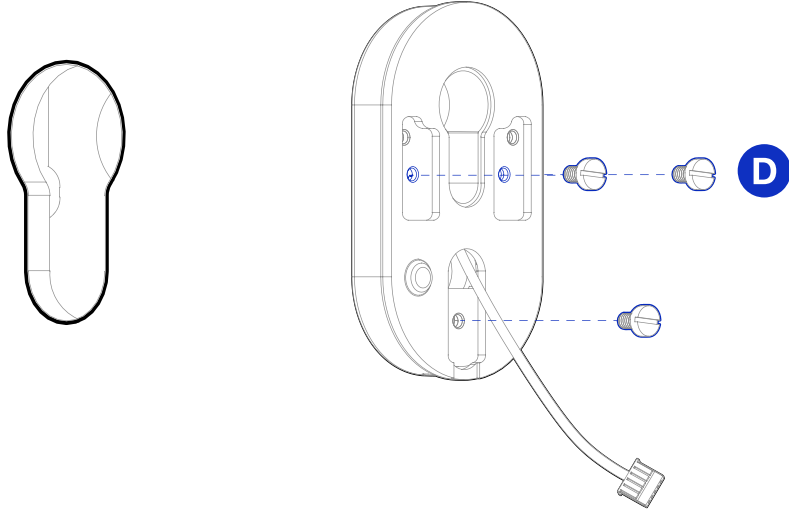
1. Place the external panel onto the door.
2. Slide the cylinder sleeve onto the cylinder, ensuring it's fully inserted.
3. Use the 3 prepared screws E to attach the mounting plate to the external panel.
4. Secure the mounting plate to the door using 2 screws B.

Proceed to Step 5.

## Install Screw D

4b.1

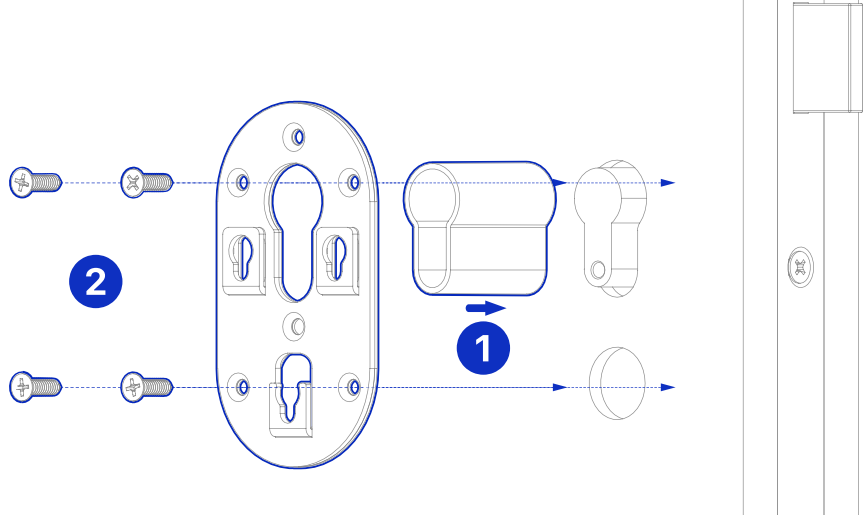
Install 3 screw D onto the back of external panel.



## Install the Adaptor and Cylinder Sleeve

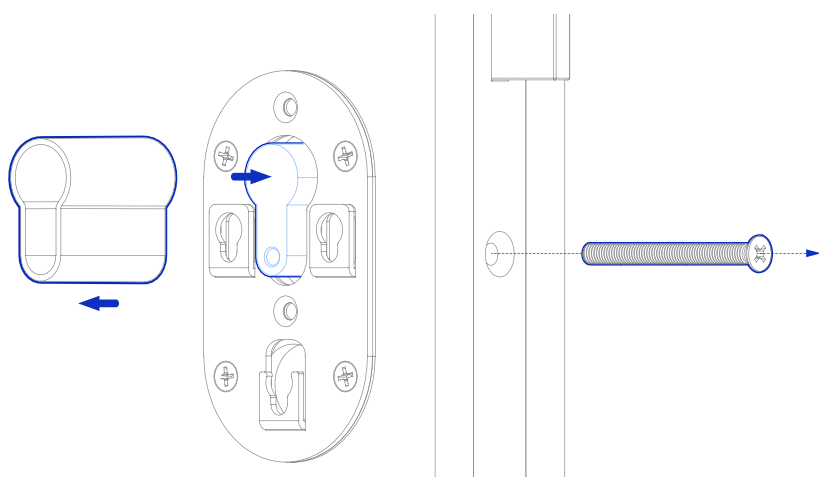
4b.2

1. Slide the cylinder sleeve onto the cylinder, ensuring it's fully inserted.
2. Secure the adaptor to the door using 4 screws B.



## Remove the Sleeve and Cylinder

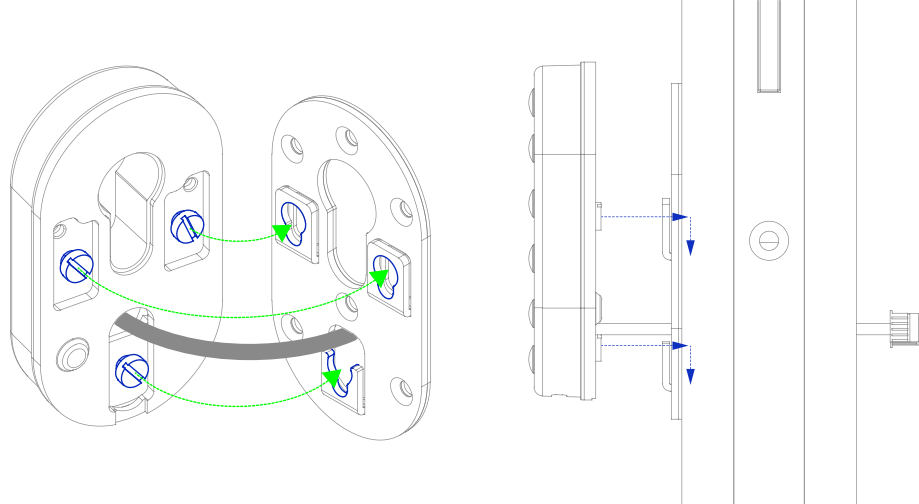
4b.3



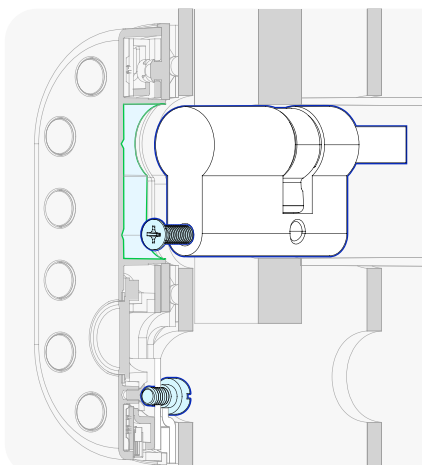
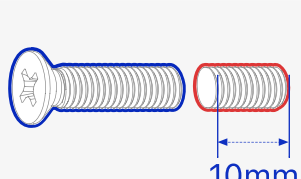
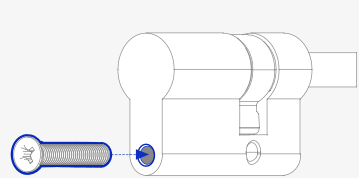
1. Remove the cylinder sleeve.
2. Remove the cylinder .

## Install the External Panel

4b.4



1. Attach the external panel to the adaptor.
2. Adjust screw F based on door thickness.
  - 40-55mm: No screw F required;
  - 55-70mm: Cut off 10mm from screw F;
  - 70-80mm: Use screw F without cutting;
  - Off-centre lock body: Cut and use screw F accordingly.
3. Thread screw F into the cylinder's bottom hole, then secure the cylinder back into the door with screw G.



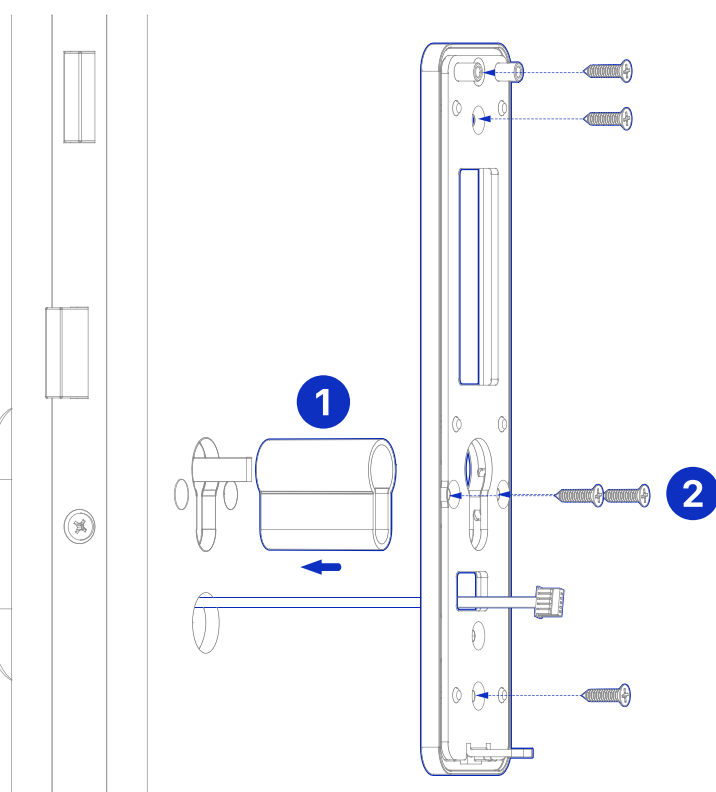
### Important!



When installing the cylinder, make sure that portion of screw F protrudes into the external panel's cylinder hole, preventing panel removal.

## Install the Mounting Plate

4b.5

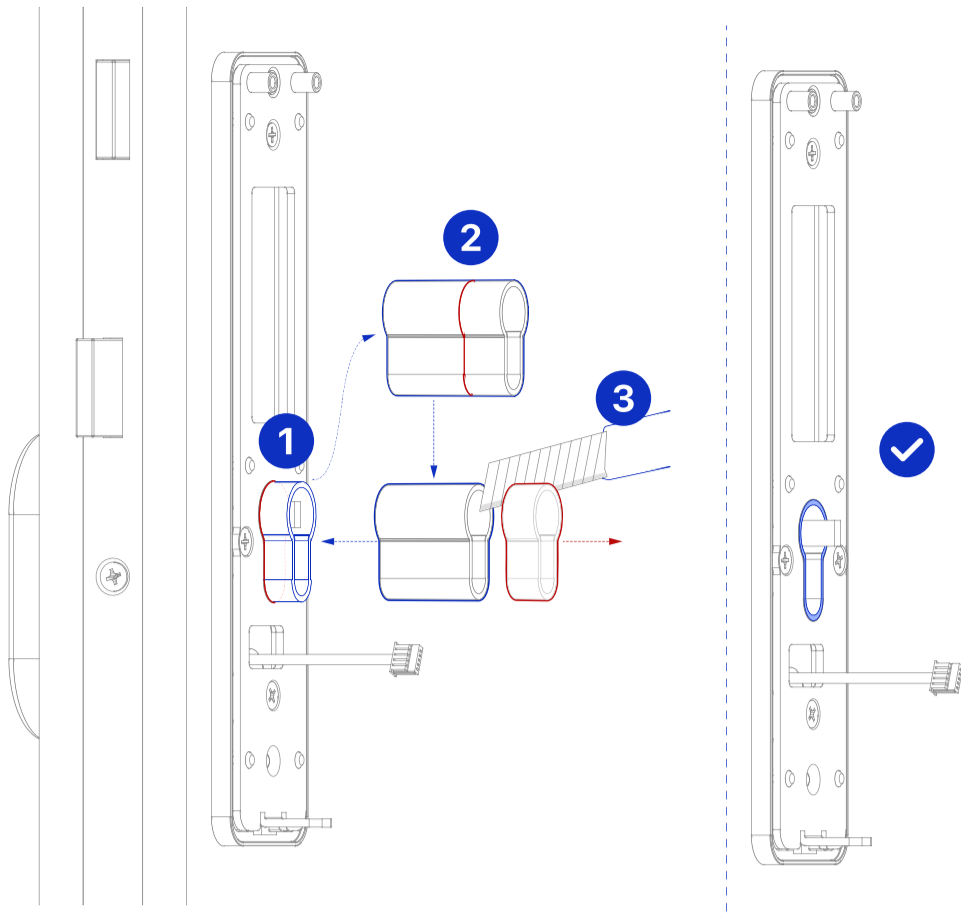


1. Slide the cylinder sleeve onto the cylinder, ensuring it's fully inserted.
2. Secure the mounting plate to the door using 5 screws B.

## Cut the Cylinder Sleeve

5.1

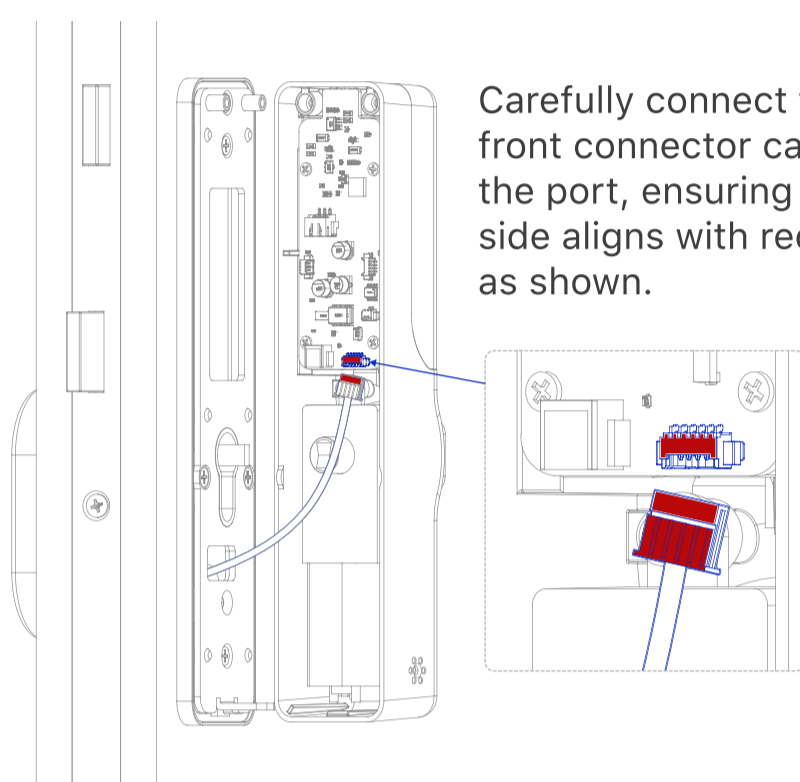
1. Mark and cut at the same level as the mounting plate for the cylinder sleeve.
2. Install the cut cylinder sleeve.



## Connect the Cable

5.2

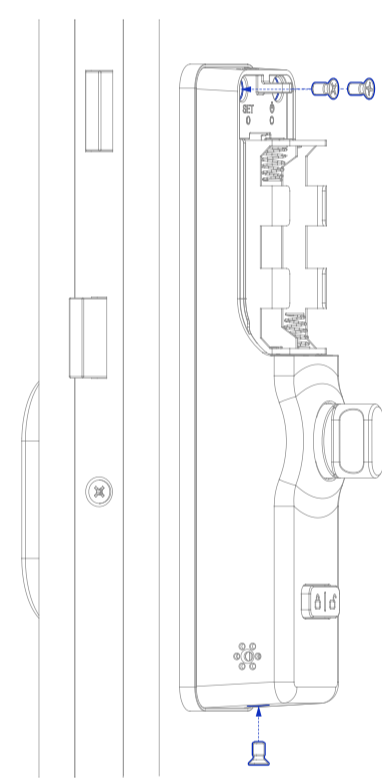
Carefully connect the front connector cable to the port, ensuring the red side aligns with red side as shown.



## Install the Internal Panel

5.3

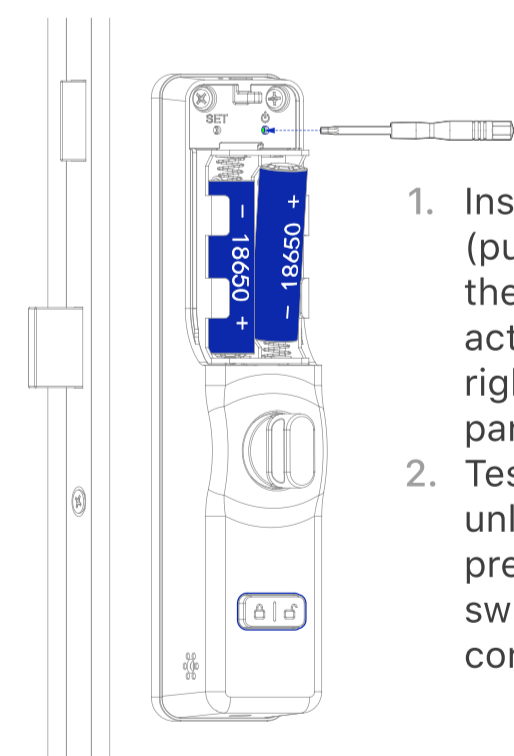
Secure the Internal Panel using 3 screws A.



## Install the Batteries

5.4

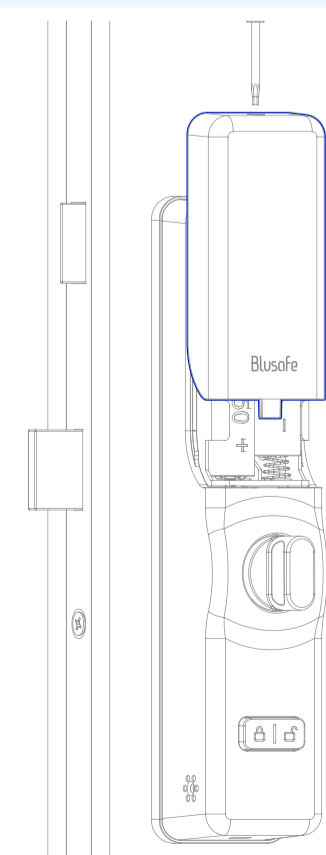
1. Install two 18650 batteries (purchased separately), then press the battery activation button on the right side of the external panel once.
2. Test the locking and unlocking function by pressing the lock/unlock switch to ensure it operates correctly.



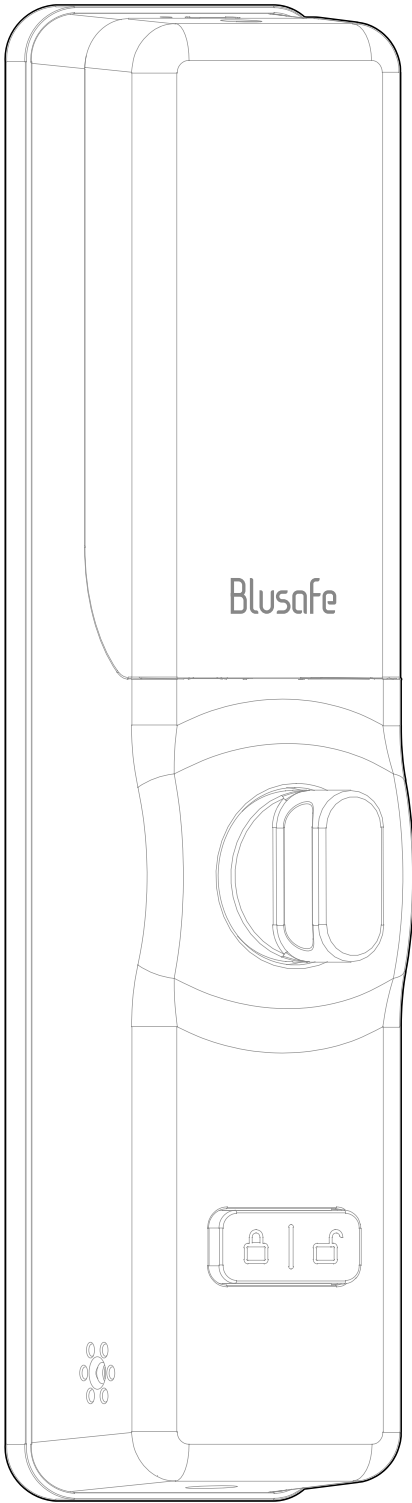
## Install the Battery Cover

5.5

Install the battery cover.







Please scan the QR to  
get the newest  
manuals on Blusafe  
products



Find out more about  
Blusafe vulnerability  
discovery & disclosure  
procedures